

Welcome to a world  
of difference

# Original Irish Hotels



# Original Irish Hotels

Our hotels nestle into a variety of landscapes, from cosmopolitan cityscapes to windswept wildernesses, and everything in between.

Stay at an Original Irish Hotel and get into the heart of the real Ireland.

Each hotel's location is shown on the map opposite. Also indicated is the page on which they are featured, for further details.

1	Abbeyglen Castle Hotel	CO. GALWAY	p14
2	Arbutus Hotel Killarney	CO. KERRY	p15
3	The Ardilaun Hotel	CO. GALWAY	p16
4	Arnolds Hotel	CO. DONEGAL	p17
5	Avalon House Hotel	CO. KILKENNY	p18
6	Ballyseede Castle	CO. KERRY	p19
7	Bayview Hotel	CO. CORK	p20
8	Bellingham Castle	CO. LOUTH	p21
9	BrookLodge & Macreddin Village	CO. WICKLOW	p22
10	Brown Trout Golf & Country Inn	CO. DERRY	p23
11	Buswells Hotel	CO. DUBLIN	p24
12	Cabra Castle Hotel	CO. CAVAN	p25
13	Casey's of Baltimore	CO. CORK	p30
14	Castle Hotel Macroom	CO. CORK	p31
15	Clew Bay Hotel	CO. MAYO	p32
16	Connemara Sands Hotel	CO. GALWAY	p33
17	Cork's Vienna Woods Hotel	CO. CORK	p34
18	Dingle Benners Hotel	CO. KERRY	p35
19	The Dunraven Adare	CO. LIMERICK	p36
20	Fitzgeralds Woodlands House Hotel & Spa	CO. LIMERICK	p37
21	Fitzpatrick Castle Hotel	CO. DUBLIN	p38
22	Garryvoe Hotel	CO. CORK	p39
23	Headfort Arms Hotel	CO. MEATH	p44
24	Hylands Burren Hotel	CO. CLARE	p45
25	Killeavy Castle Estate	CO. ARMAGH	p46
26	Killeen House Hotel & Rozzers Restaurant	CO. KERRY	p47

27	Killyheviin Lakeside Hotel & Lodges	CO. FERMANAGH	p48
28	Kilronan Castle Estate & Spa	CO. ROSCOMMON	p49
29	Kiltimagh Park Hotel	CO. MAYO	p50
30	Knockranny House Hotel & Spa	CO. MAYO	p51
31	Lough Inagh Lodge Hotel	CO. GALWAY	p52
32	Lough Rynn Castle Estate & Gardens	CO. LEITRIM	p53
33	Luttrellstown Castle Resort	CO. DUBLIN	p54
34	Markree Castle	CO. SLIGO	p55
35	Mill Park Hotel	CO. DONEGAL	p60
36	Mount Falcon	CO. MAYO	p61
37	Parknasilla Resort & Spa	CO. KERRY	p62
38	Pembroke Kilkenny	CO. KILKENNY	p63
39	Randles Hotel	CO. KERRY	p64
40	Randles Townhouse	CO. KERRY	p65
41	Sandhouse Hotel	CO. DONEGAL	p66
42	Screebe House	CO. GALWAY	p67
43	Seaview House Hotel	CO. CORK	p68
44	Sheedy's Boutique Hotel	CO. CLARE	p69
45	The Slieve Russell Hotel Golf & Country Club	CO. CAVAN	p70
46	Sneem Hotel	CO. KERRY	p71
47	Vaughan Lodge Hotel	CO. CLARE	p72
48	The Victoria Killarney	CO. KERRY	p73



# Booking & enquiries

Come and experience the very heart of Irish hospitality. Our dedicated team are on hand to assist you with any enquiry.



BOOK ONLINE:  
[www.originalirishhotels.com](http://www.originalirishhotels.com)

EMAIL:  
[reservations@originalirishhotels.com](mailto:reservations@originalirishhotels.com)

PHONE:  
+353 1 295 8900

PHONE TOLL FREE FROM USA & CANADA:  
+1 877 905 6789



01	Parknasilla Resort & Spa Co. Kerry	p62
02	Bayview Hotel Co. Cork	p20
03	Avalon House Hotel Co. Kilkenny	p18

# Welcome to a world of difference

It's my great pleasure to welcome you to our collection of exceptional and award-winning Original Irish Hotels as we celebrate 40 years in business this year.

Nestled in some of Ireland's most breathtaking locations—from the rugged Wild Atlantic Way and the historic charm of Ireland's Ancient East to the striking Causeway Coast, vibrant Dublin, and the peaceful Hidden Heartlands—our hotels offer an unforgettable escape.

Wherever you choose to stay, you'll find more than just accommodation—you'll discover genuine hospitality and experiences that leave lasting memories.

Our collection includes a diverse range of boutique and heritage hotels, enchanting castles, grand manor houses, and cozy country retreats. Each is independently owned and operated by passionate locals who bring warmth, personality, and a personal touch to your stay. These are not just getaways; they are stories waiting to be lived—brought to life by families and teams passionate about hospitality.

Guests can expect a warm Irish welcome, exceptional service, and incredible cuisine inspired by Ireland's finest local ingredients. Whether you're seeking relaxation or adventure, our hotels are set in some of Ireland's most stunning landscapes and offer a range of activities for all to enjoy.

We're incredibly proud of our collection and look forward to welcoming you soon. A stay with us promises to be nothing short of extraordinary!



INDEPENDENT HOTELIER  
& CHAIRPERSON  
David Fitzgerald



Give the gift of

# Original Irish Memories Experiences Destinations Escapes Hotels



With our Gift Card you can choose from Ireland's largest collection of independent hotels.

Order now online at: [originalirishhotels.com](https://originalirishhotels.com)  
or call us on +353 1 295 8900



01	Arnolds Hotel Co. Donegal	p17
02	Screebe House Co. Galway	p67



## Contents

### INTRODUCTION

Our hotel types	4
Experiences icon key	7
Supporting sustainability	8
Pet Friendly Stays	12

### INFORMATION

Hotels by destination	78
Hotels at a glance	80
Reservations & rates	82

### THE COLLECTION

## Our unique hotel collection 14 — 77

### TOURING ITINERARIES

Wild Atlantic Way <i>Take the Wild route</i>	26
Ireland's Ancient East <i>Wander through History</i>	40
Causeway Coast & Lakelands <i>Northern Wonders &amp; Ireland's Hidden Heartlands</i>	56
Slow Travel <i>A Slow Journey through Time</i>	74



# An authentic collection



Our hotels are as diverse as the destinations that define them. From historic castles to charming manor houses and cosmopolitan urban hotels, no two are the same. No matter which one you choose, expect the warmest of welcomes and unforgettable Irish hospitality. We look forward to welcoming you.



01	Lough Inagh Lodge Co. Galway	p52
02	Garryvoe Hotel Co. Cork	p39
03	BrookLodge & Macreddin Village Co. Wicklow	p22
04	Bellingham Castle Co. Louth	p21
05	Lough Rynn Castle Co. Leitrim	p53

## CASTLES

Set majestically on the banks of rivers, at the foot of mountains, near the edge of forests, and the shores of lakes, our breathtaking castles enchant through the turnings of time. From the luxurious linen to the roaring open fires and delicious food, escaping to an Original Irish castle is an experience like no other.

## SPA & RESORT

Lose yourself in a world of soothing saunas, relaxing jacuzzis, indulgent treatments, and tranquil thermal suites. Our luxurious spa resorts have everything you need to unwind.

## COUNTRY HOTELS

Trade urban greys for rural greeneries, and venture into the leafy surrounds of the Irish countryside. Retreat to riverbanks, seashores, mountains, and forests, and seek refuge in the pleasures of an Original Irish country hotel.



06	Randles Hotel Co. Kerry	p64
07	Scribee House Co. Galway	p67
08	Markree Castle Co. Sligo	p55
09	Knockranny House Hotel Co. Mayo	p51



#### MANOR HOUSE HOTELS

We invite you to experience the architectural grandeur of our timeless manor houses. Relax by turf fires in our light-filled drawing rooms, admire art and antiques in our spacious corridors, explore our pristine private grounds, then retire and relax in your own luxury suite.

#### CITY & TOWN HOTELS

A soaring spire, a Georgian door, a cobbled street, a winding alley, a famous bridge, a medieval city wall - stay at a centrally-located Original Irish Hotel and you'll be a stone's throw from Ireland's urban icons.

#### BOUTIQUE HOTELS

Enjoy the warm hospitality of our boutique hotels. With friendly welcomes, unique locations, and individual personalities, our boutique hotels embody the essence of authentic local charm.

#### PRIVATE RENTAL

Follow a tree-lined driveway to your 17th century castle, or explore the sweeping grounds of your historic country manor, or dine in the opulence of your luxury mansion. With our unique private rentals, you can enjoy an exclusive experience of Ireland's finest destinations.

#### PET FRIENDLY

Many of our hotels also extend their welcome to family pets — ensuring an enjoyable stay for all. Check which properties offer pet facilities on [page 13](#).

# Experiences that inspire

Whether you want to tread the beaten track or abandon it completely, we'll serve you a wealth of unmissable experiences. Choose from luxury escapes, indulgent retreats, romantic getaways and more, and make memories to last a lifetime.



#### LUXURY HAVEN

Savour the richness of an opulent escape. Experience a wealth of luxury and pampering, award-winning restaurants, and exceptional service, all in the spectacular surrounds of our unique locations.



#### WALKING & HIKING

Discover Ireland's spectacular natural beauty on foot. Ascend scenic slopes for breath-taking panoramas, descend to glimmering lakes, or follow forest trails.



#### SPA RETREATS

Leave stress at the door to experience relaxing treatments and luxurious thermal suites that make you feel brand new.



#### GOLF

Experience championship golf courses against the backdrop of some of Ireland's most spectacular scenery.



#### ROMANTIC & GETAWAY

Fuel your passion for adventure, lust for local cuisine or fall in love with our spectacular surrounds.



#### FAMILY HOTELS

Spark imaginations on unforgettable family breaks. Hunt fairies on winding woodland walks, splash in our swimming pools or swim in foamy seas.



#### COUNTRY ACTIVITIES

We'll show you our favourite spots for fishing, foraging, and falconry. Shoot some clays, saddle up, or simply walk out into the wonderful wild.



#### WEDDINGS

We offer a choice of dream wedding venues across Ireland with perfect packages for all four seasons.



# Supporting sustainability



At Original Irish Hotels we are committed to achieving the highest level of sustainability and reducing our carbon footprint across each of our hotels in support of a greener environment.

When you dine at an Original Irish Hotel, in many cases the food on your plate will have come from the estates walled gardens or onsite farm. Hotels such as [Parknasilla Resort & Spa](#), [Killeavy Castle Estate](#), [Lough Rynn Castle Estate & Gardens](#), [Fitzgeralds Woodlands House Hotel & Spa](#) and [Casey's of Baltimore](#) have their own organic kitchen, vegetable and herb gardens and are constantly minimising their impact on the environment.

At Killeavy Castle Estate all of the beef and lamb are sourced from the onsite working farm. Along with this, over 90% of food products used in the Estate kitchens are sourced from the farm or local Irish suppliers. Other hotels such as [Cabra Castle Hotel](#) have made a conscious effort to plant more trees which has created a new habitat for birds and other wildlife. [Cork's Vienna Woods Hotel](#) have installed over 150 solar panels on the roof of the hotel to generate their own electricity.



- o1 The organic garden at Fitzgeralds Woodlands House Hotel & Spa
- o2 The kitchen garden at Parknasilla Resort & Spa
- o3 The kitchen garden at Knockranny House Hotel
- o4 Herb garden at the Dunraven Adare



We continually strive to improve our environmental practices across a range of areas including waste, energy, water, and travel.

The Dunraven Adare produce their own herbs and micro herbs in the Dunraven garden, enriched by their own compost produced from some of their organic waste. The remainder of the hotel's organic food waste is removed from onsite and converted into biofuel by its selected food waste collector, with whom the staff collaborate with once a year.

The hotel has also constructed its own Insect Hotel to provide an ideal habitat for all sorts of beneficial insects, particularly for solitary bees and wasps that make individual nests for their larvae.

Other less visible initiatives undertaken by our hotels include switching to LED lighting, or installing combined heat and power systems which are healthier for the environment. Plastic is slowly becoming a thing of the past, with most hotels switching to glass or reusable bottles and paper straws. Clew Bay Hotel is a prime example having completely eliminated single use plastics.

Several of our hotels have been awarded for their environmental practices, such as Clew Bay Hotel which was awarded silver for Ireland's leading green/sustainable hotel, while many others are proud members of REPAK, the environmental non-profit organisation which promotes recycling and sustainability.

Fitzgeralds Woodlands House Hotel & Spa are proud holders of the TripAdvisor Green Leader, Bronze Award. Caring for the environment is second nature for the Fitzgerald Family who have implemented several proactive measures to help protect the environment throughout their hotel, restaurant, and spa.



All food waste is composted and used for Mary's Organic Garden and the organic farm, both of which are home to trees planted as part of the resort's carbon offset programme. Microbeads are banned from the hotel's in-room toiletries and Revas Spa and staff right across the resort are working towards eliminating single use plastic, with the hotels go-to packaging being 97% fully compostable. What's more, the resort also has its own well and waste-water treatment plant on-site, which means it is entirely self-sufficient.

BrookLodge & Macreddin Village has a variety of venues on-site offering free range, organic and wild food options. The Strawberry Tree is Ireland's first certified organic restaurant, which features the freshest organic and wild foods, many foraged by the hotel's own chefs and full-time food foragers in the fields and woods surrounding Macreddin Village. The hotel also hosts a food market once a month to give local suppliers and producers and opportunity to sell their goods.

The world's first ZEROKM Dinner took place in BrookLodge & Macreddin Village — and history was made!

- 05 Gardens at Killeavy Castle Estate
- 06 Gardens at Lough Rynn Castle Estate & Gardens
- 07 BrookLodge & Macreddin Village
- 08 Wild food pantry, BrookLodge & Macreddin Village
- 09 Organic garden, Fitzgeralds Woodlands House Hotel & Spa



# Pet Friendly Stays

Your furry friend deserves a holiday too! Our pet-friendly hotels offer warm hospitality, comfortable accommodation, and plenty of scenic walks to explore together.

T&Cs apply.

Whether it's a cozy countryside retreat or a coastal escape, you and your pet will feel right at home. Enjoy a truly welcoming stay, where tails wag and memories are made.



PET FRIENDLY STAYS

The Ardilaun Hotel	p16
Brown Trout Golf & Country Inn	p23
Connemara Sands Hotel	p33
Cork's Vienna Woods Hotel	p34
Killeavy Castle Estate	p46
Killeen House Hotel & Rozzers Restaurant	p47
Killyhevlin Lakeside Hotel & Lodges	p48

Lough Inagh Lodge Hotel	p52
Luttrellstown Castle Resort	p54
Mount Falcon	p61
Parknasilla Resort & Spa	p62
Randles Hotel	p64
Seaview House Hotel	p68
Sneem Hotel	p71



# Abbeyglen Castle Hotel



Nestled in the romantic setting of the Twelve Bens with beautiful views overlooking Clifden Bay.



1

## PROPRIETORS

Brian & Ronan Hughes

FÁILTE IRELAND

★★★★

## ROOMS — 45

OPEN: February–December

B&B from €100 pps

Dinner from €59

## ADDRESS

Sky Road, Clifden,

Co. Galway

H71 NX28

T +353 95 21201

You will notice the welcoming smiles from the moment you arrive at the magnificent 4-star Abbeyglen Castle Hotel, just outside Clifden, Co Galway, which was built for real comfort and splendour back in 1832.

Abbeyglen Castle invites you to enjoy the genuine ambience of friendliness and superior comfort that surrounds you everywhere you go in their much loved hotel. Immerse yourself in the stunningly beautiful landscape of Connemara. Sleep soundly in the very comfortable bedrooms. Savour award-winning cuisine.

Take full advantage of their new wellness and relaxation centre. And whatever you do, come early to take full advantage of the legendary service throughout your stay in Abbeyglen Castle Hotel.



# Arbutus Hotel Killarney



A boutique hotel in the heart of Killarney town.

2

## PROPRIETORS

Buckley Family

FÁILTE IRELAND

★★★★

## ROOMS — 30

OPEN: February–December

B&B from €75 pps

Dinner from €45

## ADDRESS

College St, Killarney,

Co. Kerry

V93 AYP9

T +353 64 663 1037

Arbutus Hotel Killarney is a charming oasis of calm in the heart of Killarney. Here you will find caring and friendly service, the highest standards of comfort and food (its breakfasts are spoken about with reverence, far and wide), and great local knowledge.

The Buckley family has built the mood and spirit of the Arbutus for almost a century, making it one of the best loved hotels in Killarney. The effect is instant from the moment you step in the doors: you are glad to be in Kerry, glad to be in Killarney and, above all, you are glad to be in the Arbutus.

The satisfaction of past guests has resulted in a number of awards and recommendations, such as placing in TripAdvisor's 'Top 25 Irish Hotels for Service', receiving the Original Irish Hotels Service Excellence Award 2018 & 2023 Tripadvisor Best of the Best.







# The Ardilaun Hotel



Nestled in the heart of Galway, The Ardilaun Hotel is a family-run oasis of comfort and charm.



3

## PROPRIETOR

John Ryan

FÁILTE IRELAND

★★★★

ROOMS — 123

OPEN: All year  
(excl. 24th – 26th December)

B&B from €60 pps  
Dinner from €46

## ADDRESS

The Ardilaun Hotel,  
Taylor's Hill Rd, Galway,  
H91 H29F

T +353 91 521 433



Set amid five acres of lush gardens, this four-star hotel blends old-world elegance with modern amenities. Guests can unwind in the family friendly Camilaun Restaurant, enjoy a relaxing drink in the cozy Blazers Bar & Bistro, or rejuvenate at the Ardilaun Leisure Club, featuring a state-of-the-art gym and serene spa. With spacious rooms, free parking, and close proximity to Galway's bustling city centre, The Ardilaun offers the perfect retreat for both leisure and business travellers seeking a restful escape with a personal touch.

Experience a tranquil escape at The Ardilaun Hotel with their unique blend of lush gardens and top-tier leisure facilities. Wander through the five acres of beautifully manicured gardens, where vibrant flowers and towering trees create a peaceful retreat just minutes from Galway's lively city centre. After your stroll, unwind at the Leisure Club, which boasts a state-of-the-art gym, an 18-meter heated swimming pool, sauna, and a serene jacuzzi. Whether you're taking a leisurely swim or enjoying a quiet moment in the gardens, The Ardilaun offers a perfect balance of relaxation and rejuvenation, making your stay truly unforgettable.



Spectacular vistas of Sheephaven Bay and the golden sands of Killahoe Beach just a short stroll away – the perfect spot to relax and unwind.

4

## PROPRIETOR

Aisling Arnold

FÁILTE IRELAND

★★★★

ROOMS — 30

OPEN: All year  
(part time during winter months)

B&B from €60 pps  
Dinner from €30

## ADDRESS

Dunfanaghy, Co. Donegal  
F92 N6TF

T +353 74 913 6208



Nestled in the picturesque seaside village of Dunfanaghy along the stunning Wild Atlantic Way, Arnolds Hotel is a fourth-generation, family-run hotel with over 100 years of tradition in hospitality. Renowned for its exceptional service, warm atmosphere, and dedication to quality, Arnolds is the perfect destination for a relaxing escape. Overlooking the breathtaking Sheephaven Bay, Arnolds Restaurant serves quality Irish cuisine crafted from locally sourced ingredients, paired with an excellent selection of fine wines.

For adventure seekers, a wide range of activities awaits, from golf, cycling, kayaking, and surfing to hiking, yoga, and water sports. Golfers can enjoy reduced green fees at the spectacular 18-hole Dunfanaghy links course, as well as other nearby clubs.

For those seeking creativity, they offer group activity weekends, including painting, photography, and writing workshops. The surrounding area is rich in natural beauty, with must-visit attractions such as the Horn Head Scenic Drive, Ards Friary & Forest Park, Fanad Lighthouse, and Glenveagh Castle & National Park. With a proud legacy of excellence, Arnolds Hotel has been recognised as Ireland's Best Three-Star Hotel in 2017, 2018, 2019, and 2022.

# Avalon House Hotel



This family-owned hotel prides itself on offering a genuine welcome from an excellent team of dedicated staff.



5

**GENERAL MANAGER**  
Peter Wilson

FÁILTE IRELAND  
★★★★

**ROOMS — 30**  
OPEN: All year  
(excl. 25th & 26th December)  
B&B from €100 pps  
Dinner from €45

**ADDRESS**  
The Square, Castlecomer  
Co. Kilkenny  
R95NA06  
T +353 56 444 1302



A warm and inviting atmosphere awaits you at the newly renovated Avalon House Hotel, in the heart of the charming town of Castlecomer. This boutique hotel, housed in a meticulously restored historic manor dating back to the 19th century, just a short drive from Ireland's Medieval Capital, Kilkenny City, offers a delightful blend of old-world charm and modern comfort.

With 30 beautifully furnished bedrooms, the accommodation seamlessly combines the elegance of a bygone era with the conveniences of a contemporary hotel. Indulge in culinary delights with two dining options, highlighting the best local fresh produce. Lil's at Avalon House Hotel provides a tranquil setting for enjoying delicious food in good company. Meanwhile, Lark's Bar exudes charm and character, inviting you to relax by the wood-burning stove, and the option for a luxurious Afternoon Tea.

Whether you are seeking a romantic getaway, a cultural adventure, or a peaceful escape, Avalon House Hotel promises an unforgettable experience where history and luxury converge. Immerse yourself in the beauty of Castlecomer and its surroundings while enjoying the warmth of Irish hospitality at this enchanting manor house.



Elegant accommodation, fine dining, rooms that tell a story and the picturesque natural setting, all comprise to make Ballyseede Castle truly memorable.



6

**PROPRIETORS**  
Marnie & Rory O'Sullivan

FÁILTE IRELAND  
★★★★

**ROOMS — 45**  
OPEN: 4th March –  
6th January  
B&B from €70 pps  
Dinner from €59.50

**ADDRESS**  
Ballyseede,  
Tralee, Co. Kerry  
V92 VW30  
T +353 66 712 5799



As Kerry's only castle hotel, the magnificent Ballyseede Castle offers an authentic castle experience full of Irish charm and personality. Set on 30 acres of ancient woodlands and manicured gardens, close to the famous Ring of Kerry, Ballyseede Castle Hotel is beautifully placed in secluded grounds and is the perfect choice for unforgettable weddings, private events, and guests alike.

At Ballyseede Castle, you will enjoy old world elegance, combined with modern-day comforts. The castle now offers 39 luxurious en-suite bedrooms – many with four-poster beds and garden views, and all the epitome of luxury ensuring you end your day in decadent comfort and style.

When you pass through the gates of Ballyseede Castle, you know you are entering a most special world steeped in history and splendour. It offers you one of the most memorable places of all to stay in the South West of Ireland. Its relaxed atmosphere, luxury accommodation and award-winning food makes it the ultimate destination for families, couples, and individuals alike. The person they most look forward to seeing is you.





# Bayview Hotel



An elegant manor house, offering stunning views over miles of coastline – a perfect retreat from a busy world.



7

## MANAGING DIRECTOR

Stephen Belton

FÁILTE IRELAND

★★★★

## ROOMS — 35

OPEN: 1st April

–1st November

B&B from €85 pps

Dinner from €65

## ADDRESS

Ballycotton,

Co. Cork

P25 KP59

T +353 21 464 6746

For over 700 years, the little harbour of Ballycotton, Co Cork, has been a haven for seafarers. Today, the Bayview Hotel affords rest and retreat, combining a sure sense of comfort and style with great dining and attentive service.

The Bayview, with its elevated aspect over the splendid coastline, lives up to its name in spectacular fashion. Pleasant gardens give access to one of Ireland's loveliest bathing spots and there are miles of sandy beaches within easy reach.

Visit the Jameson Experience whiskey centre or Cobh Heritage Centre. Take a trip to the fabulous Fota Island with its arboretum and wildlife park. There are six 18-hole courses in the area for golf enthusiasts, or try sea angling, the challenge of deep sea fishing and catching skate and conger eel.

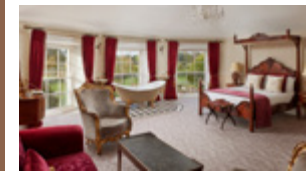
Guests at Bayview also have full use of the leisure and health club facilities at Garryvoe Hotel nearby.



# Bellingham Castle



Set on a stunning 17 acre estate, overlooking its own river and weir at the gateway to the Cooley Mountains in the lovely northeast of Ireland.



8

## PROPRIETORS

Corscadden Family

## ROOMS — 28

OPEN: All Year

(excl. 24th–26th December)

Private rental only from

€2,500

## ADDRESS

Castlebellingham,

Co. Louth

A91 RP44

T +353 42 937 2176

Bellingham Castle is an elegant and spacious 17th Century Irish Castle in Ireland's North East, less than an hour from both Dublin and Belfast and only 2km from the M1 motorway that joins them. Bellingham Castle are delighted to welcome you to their beautiful Irish castle venue nestled in the heart of the medieval village of Castlebellingham. As soon as you enter the castle grounds, via a beautiful stone tower and glide down the tree-flanked driveway, you are instantly transported back in time.

Bellingham Castle is the centrepiece of a wonderful 17-acre estate. Set on the banks of the River Glyde, it includes a weir and man-made river island with footbridges, mature trees and formal gardens. Bellingham Castle's formal drawing rooms, cosy library, bars and elegant Bute Suite make it particularly attractive for private weddings, civil partnerships and corporate events, while the bedrooms are rich in history, style and comfort. The perfect place for a romantic castle wedding, Bellingham Castle also excels at private functions, conferences and special events.



# BrookLodge & Macreddin Village



A unique and luxurious experience in a picturesque Wicklow Valley, the perfect spot to get away from it all.

9

PROPRIETOR

Evan Doyle

FÁILTE IRELAND

★★★★

## ROOMS — 86

OPEN: All Year  
(excl. 24th–25th December)  
B&B from €90 pps  
Dinner from €58

## ADDRESS

Macreddin Village,  
Co. Wicklow, Y14 A362  
T +353 402 364 44



BrookLodge & Macreddin Village is located in a spectacular valley in Co. Wicklow, just one hour's drive from South Dublin. Country house style and state-of-the-art facilities combine to deliver a unique experience. Relax and unwind at The Wells Spa, a designated 'resort spa'. Dine at The Strawberry Tree, Ireland's first certified Wild and Organic Restaurant, or La Taverna Armento, a Southern Italian style bistro.

The hotel also hosts Actons Country Pub, The Orchard Café, an Organic Bakery, a Smokehouse and a Wild Food Pantry and much more. Macreddin Golf Course designed by European Ryder Cup Captain Paul McGinley is a short stroll from BrookLodge. Macreddin Village has twice won AA Hotel of the Year, Ireland's Culinary Hotel of the Year and Ireland's Luxury Eco-Friendly Hotel. Other recent awards for The Strawberry Tree Restaurant include titles such as Best Restaurant and Best Organic Restaurant.



# Brown Trout Golf & Country Inn



Set in spectacular scenery,  
perfect for a golfing break  
or just a weekend break  
away from it all.

**G**

**PROPRIETOR**

Jane O'Hara

## TOURISM NI

★ ★ ★

## ROOMS — 15

OPEN: All year  
B&B from £75 pps  
Dinner £35

## ADDRESS

Aghadowey,  
Nr Coleraine,  
Co. Londonderry, NI  
BT51 4AD

T +44 28 7086 8209



Owned and managed by the O'Hara family for four generations, the Brown Trout Golf and Country Inn in Aghadowey, near Coleraine, has comfortable, friendly accommodation in one of the most beautiful parts of Ireland. Their mission is to create lifetime customers through excellent service. Stay with them and find out why they are succeeding. Brown Trout Inn takes pride in using locally sourced ingredients to prepare a wide range of dishes from breakfast through lunch and dinner.

You can enjoy fishing, relax by the fire or play golf on their own 9-hole course at the Brown Trout Inn. The serious golfer will relish the challenge of Royal Portrush Golf Club nearby and most guests to Northern Ireland adore the world-famous Giant's Causeway, which is just a short drive away. Brown Trout Golf & Country Inn is recommended by Georgina Campbell's Ireland Guide. Set in spectacular scenery, perfect for a golfing break or just a weekend break away from it all.



# Buswells Hotel



Located on a quiet street just a short stroll to the best Dublin has to offer, from picturesque Stephen's Green, to Trinity College, and the National Museum.

11

**GENERAL MANAGER**  
Veronica Timlin

FÁILTE IRELAND  
★★★★

**ROOMS — 67**  
OPEN: All year  
(excl. 24th–27th December)  
B&B from €80 pps

**ADDRESS**  
23–27 Molesworth  
Street, Dublin 2  
D02 CT80  
T +353 1 614 6500

Buswells, nestled in the peaceful heart of Georgian Dublin, is one of the oldest hotels in Ireland's capital city. The hotel offers character, charm and value for money, and you can always be assured of a warm and friendly welcome. All bedrooms are tastefully decorated, with a luxurious goose down comforter to help you relax. There is complimentary tea/coffee and bottled water in each bedroom, along with plasma screen TV. Guests can avail of complimentary WiFi.

Buswells is located just a short stroll from Trinity College, home to the Long Room library and the famous Book of Kells, the National Museum, St Stephen's Green, Dublin Castle and a variety of art galleries.

There is a great choice of theatres nearby, including The Abbey, Olympia, Gaiety and Bord Gáis Energy Theatre, and Buswells is right within the central business and shopping areas. The Aircoach to and from the airport stops close to the hotel on Kildare Street.



Renowned for its history, idyllic location, exquisite food and superb range of accommodation, Cabra Castle is one of the leading luxury hotels in Ireland.

12

**PROPRIETORS**  
Corscadden Family

FÁILTE IRELAND  
★★★★

**ROOMS — 106**  
OPEN: All year  
(excl. 24th–26th December)  
B&B from €120 pps  
Dinner from €55

**ADDRESS**  
Kingscourt,  
Co. Cavan  
A82 EC64  
T +353 42 966 7030

Idyllically set amidst sprawling lawns on a 100-acre estate, Cabra Castle showcases stunning architecture, luxurious furnishings, and phenomenal natural attractions. Located in County Cavan, just over an hour from Dublin and Belfast, Cabra Castle is ideally located for touring Ireland, short breaks, corporate events, and unforgettable weddings.

This 18th Century Castle enjoys spectacular views of the surrounding countryside, with patios and terraces situated perfectly to enhance the majestic scenery. Cabra Castle boasts 106 stunning en-suite bedrooms, ranging from the grandeur of rooms in the original castle to beautiful rooms in the 17th Century courtyard. Each comes with individual style and character, tastefully decorated with restful tones and luxurious furnishing.

Wander through the opulent reception rooms, find a quiet corner or fireside to relax with a book, or just enjoy the atmosphere in one of the best-known Castle hotels in Ireland. Period features and furnishings create an authentic, old-world charm and a long tradition of warm and friendly service makes Cabra Castle the perfect retreat from the pace of modern living.





TOURING ITINERARY NO.1

# Take the wild route

Wind along coast-hugging roads and discover 2,500 kilometres of jaw-dropping Atlantic beauty.

The Wild Atlantic Way runs along the western coast of Ireland, stretching from Donegal in the north to Cork in the south. It passes through stunning regions like Connemara, The Burren, Galway Bay, and Kerry, making it the longest defined coastal route in the world.

Many of our hotels are perfectly positioned along this iconic route, offering the ideal base to explore it. Each property is independently owned and uniquely styled, providing an authentic and distinctly Irish experience.



Day 1 — DONEGAL

Take the coast road towards the most northerly point in Ireland, Malin Head where the wild Atlantic has carved deep crevices into the rugged headland.

Enjoy panoramic views at Fanad Head and Fanad Lighthouse and the sweeping views from Sliabh Liag, which are amongst the highest sea cliffs in Europe as you head towards Donegal town.



Stay at:

4	Arnolds Hotel	p17
35	Mill Park Hotel	p60
41	Sandhouse Hotel	p66



Day 2 — DONEGAL TO MAYO

As you leave Donegal and explore the coast of Sligo and Mayo, you can experience waves like no other at Mullaghmore Head.

As you move into Mayo you will notice that this region has some fantastic championship golf courses. The bustling town of Westport is one of the most popular destinations in Ireland and comes alive with traditional Irish music sessions.

The town is renowned for the Great Western Greenway, Ireland's first off-road walking and cycling trail which is 42 km long and runs from Westport to Achill Island.



Stay at:

15	Clew Bay Hotel	p32
29	Kiltimagh Park Hotel	p50
30	Knockranny House Hotel & Spa	p51
34	Markree Castle	p55
36	Mount Falcon	p61





Day 3 — MAYO TO CONNEMARA

As you move along this coastal route, you will be entering the unique landscape of Connemara which has been described as one of the most scenic regions in Ireland.

Killary Harbour is famous as the start of the Killary Fjord which is a glacial fjord that contains some of Ireland’s most awe-inspiring and dramatic scenery.

As you move through the rest of Connemara, you will reach some stunningly remote locations that offer extraordinary castles and abbeys to view and explore. The famous Kylemore Abbey and Victorian Walled Gardens are a must-visit.

Stay at:

1	Abbeyglen Castle Hotel	p14
3	The Ardilaun Hotel	p16
16	Connemara Sands Hotel	p33
31	Lough Inagh Lodge Hotel	p52
42	Screebe House	p67



Day 4 — CONNEMARA TO THE BURREN

Travelling south from Connemara, you will pass through the city of Galway, renowned for its culture and youthful vibrancy.

From Galway, you will move along the coast to one of the most dramatic and famous stretches of coast in the world. This region of Clare is known as The Burren and is a vast limestone landscape that covers much of the county and then out to sea, where it appears again in the form of the Aran Islands.

Moving down this dramatic coastline you will reach the world famous Cliffs of Moher. These cliffs can be viewed by sea or those brave enough can walk along the top as they look out over the Atlantic Ocean.

Stay at:

19	The Dunraven Adare	p36
20	Fitzgeralds Woodlands House Hotel & Spa	p37
24	Hylands Burren Hotel	p45
44	Sheedy’s Boutique Hotel	p69
47	Vaughan Lodge	p72

Day 5 — CLARE TO RING OF KERRY

Next is ‘The Kingdom’ of Kerry with its dramatic mountains, coastal views and lively towns. Dingle offers visitors fantastic Irish music, stunning views, award winning seafood restaurants and a warm welcome.

From here you will make your way onto the Ring of Kerry, which follows the course of the largest peninsula in Kerry.

You will travel through winding roads that hug Ireland’s highest mountain range and reach the remote outpost of Skellig Michael. Eight miles off the coast is one of the wonders of the world. Skellig Michael is a UNESCO World Heritage Site and is where, 1300 years ago, Christian monks built a remarkable home at the top of this jagged ocean rock.

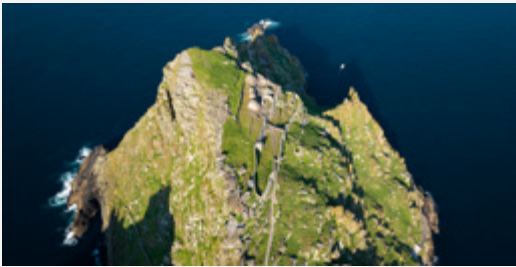


Stay at:

13	Casey’s of Baltimore	p30
14	Castle Hotel Macroom	p31
43	Seaview House Hotel	p68

Stay at:

2	Arbutus Hotel, Killarney	p15
6	Ballyseede Castle	p19
18	Dingle Benners Hotel	p35
26	Killeen House Hotel	p47
37	Parknasilla Resort & Spa	p62
39	Randles Hotel	p64
40	Randles Townhouse	p65
46	Sneem Hotel	p71
48	The Victoria Killarney	p73



Day 6 — KERRY TO CORK

Before you leave County Kerry, you will arrive in the market town of Kenmare, a haven for tranquillity, boutique shopping, gourmet food and breathtaking scenery.

As you travel through the rest of the Beara Peninsula, you will see a changing of the landscape that has an almost microclimate which allows the growth of lush vegetation and sub-tropical shrubs.

You can go no further south and west in the whole of Ireland, when you reach Mizen Head. From here you can walk across the arched suspension bridge connecting the mainland to a rocky crag that points out to the crashing seas.

Travel towards Kinsale, on the way stop off at some of the quaint fishing villages such as Skibbereen and Baltimore that hug the coast and harness the Atlantic Ocean for fishing.

Reaching Kinsale you will discover a town that is known as the gourmet capital of Ireland and is foodie heaven!

# Casey's of Baltimore



A charming family-run hotel located at the entrance to the delightful sailing and fishing village of Baltimore in West Cork.



13

**PROPRIETORS**  
Casey Family

FÁILTE IRELAND  
★★★★

**ROOMS — 14**  
OPEN: All year  
(excl. 19th–27th December)  
B&B from €70 pps  
Dinner from €60

**ADDRESS**  
Baltimore,  
Co. Cork  
P81 YW66  
T +353 28 20197



The view is the first thing that will take your breath away at Casey's of Baltimore Hotel in West Cork. Located right beside the bay, this family-run hotel, seafood restaurant and traditional pub is the perfect base for exploring scenic West Cork, as well as Sherkin, Cape Clear and Heir Islands.

The charming hotel offers quality accommodation while Casey's pub, which dates back to the 1800s, adds a cosy old-world atmosphere (complete with live traditional music). The Casey family's passion for local produce is reflected in the seafood coming from the Baltimore fishing fleet and their own mussel farm, home-grown vegetables and herbs, and home-baked bread. They even brew their own beer!

Baltimore Lodge, on the hotel grounds, consists of three well appointed rooms, each with a seaview, all boasting of Kingsize beds, Smart TV, free Wifi, broadband connection, direct dial telephone, iron and ironing board and ample parking at the hotel.



# Castle Hotel Macroom



In the heart of the lively town of Macroom, perfectly situated for daytrips around Cork and Kerry.

14

**PROPRIETORS**  
The Buckley Family

FÁILTE IRELAND  
★★★★

**ROOMS — 58**  
OPEN: All year  
(excl. 24th–28th December)  
B&B from €75 pps  
Dinner from €45

**ADDRESS**  
Macroom,  
Co. Cork  
P12 X293  
T +353 26 41074



Welcoming visitors to the traditional market town of Macroom for over 70 years, The Buckley Family are now in their third generation. Nestled between Cork City, Blarney, Killarney and West Cork's world-famous coastline, this charming hotel offers you the ideal base from which to explore an abundance of amazing activities on your doorstep and across Ireland's South-West. You'll find they're brimming with ways to get out and about and just as many ways to kick back and relax surrounded by sensational scenery.

The Castle Hotel Macroom is famous country-wide for its take on sustainable Irish food. As members of Good Food Ireland and Slow Food, their kitchen is committed to championing local artisan food producers, while minimising the impact on the environment. Visit Macroom and experience a genuine Irish welcome from The Buckley Family, fabulous food and all the modern facilities you would expect from a multi award-winning 4-star Hotel.





# Clew Bay Hotel



Combining a genuine welcome and an outstanding location, this family-owned Westport hotel promises a truly memorable experience.



15

**PROPRIETORS**  
Darren Madden  
& Maria Ruddy Madden

FÁILTE IRELAND  
★★★★

**ROOMS — 49**  
OPEN: All year  
(excl. December & January)  
B&B from €60 pps  
Dinner from €35  
(excl. service charge)

**ADDRESS**  
James Street,  
Westport, Co. Mayo  
F28 WD66  
T +353 98 28088



Situated in the heart of historic Westport, this family-owned and managed hotel offers a genuinely warm welcome. Clew Bay is an ideal base for discovering Westport, Achill Island, Clew bay and Connemara.

The hotel’s knowledgeable staff and partners will guide you through the Wild Atlantic Way experience – from climbing majestic Croagh Patrick, island-hopping in Clew Bay, kayaking with the seals in the bay, cycling the Great Western Greenway from Achill to Westport, or simply taking a boat trip or drive along the West Coast. Guests can enjoy complimentary access to Westport Leisure Park, located next door. Clew Bay looks forward to you experiencing a truly Irish welcome from their staff, for you will arrive as their guests and leave as friends.

Recently awarded silver for Ireland’s Best 3-Star Hotel at the Virgin Media Gold Medal Awards 2024.



# Connemara Sands Hotel



A coastal boutique style hotel that boasts private access to the beach and a number of different water activities.



16

**PROPRIETOR**  
Dean Gibson

FÁILTE IRELAND  
★★★★

**ROOMS — 21**  
OPEN: February–November  
B&B from €80 pps  
Dinner from €60  
(excl. service charge)

**ADDRESS**  
Mannin,  
Ballyconneely, Clifden,  
Co. Galway  
H71TY79  
T +353 95 23030



Connemara Sands Hotel is perfectly positioned on the west coast of Ireland. Cradled by the Twelve Bens mountain range and surrounded by the stunning aqua blue waters and white sand beaches of Mannin Bay, in the heart of Connemara and The Wild Atlantic Way.

A coastal boutique style hotel that boasts private access to the beach and a number of different water activities. There is also an organic Seaweed Spa for those that just wish to relax and rejuvenate while availing of the unique health benefits of seaweed therapy. In Sands Bar you can enjoy an excellent choice of authentic Irish food and beverage options, all expertly chosen, prepared and presented by an amazing team of chefs and bartenders. Their sole aim is to provide every guest with a truly memorable, authentic Irish experience.

Connemara Sands has recently introduced their beachside Rugged Retreat Thermal Spa. The spa uses seaweed-based products and includes outdoor beach/seaside seaweed baths, a hot tub and a sauna. There is also a food truck that serves specialty food & beverage items to compliment the treatments.

# Cork's Vienna Woods Hotel



An elegant 18th century country house with genuine old-world, vintage charm. Nestled among twenty two acres of private woodlands, overlooking the Glashaboy river.



17

**PROPRIETOR**  
Michael Wagner

FÁILTE IRELAND  
★★★★

**ROOMS — 70**  
OPEN: All year  
B&B from €75 pps  
Dinner from €47

**ADDRESS**  
Glanmire, Co Cork  
T45 V065

T +353 21 455 6800

Cork's Vienna Woods Hotel, in the historic village of Glanmire, is nestled in over 22 acres of mature wooded parkland overlooking Cork Harbour. Just three miles from Cork city centre and 9 miles from Cork International Airport, they are located close to some of Cork's finest attractions such as Blarney Castle, Jameson Distillery, Titanic Experience Cobh and The English Market. Built in 1905, this family-owned hotel offers old-world charm in comfortable and tasteful surrounds, and is ideal for exploring Cork city and county. Food is served in the award-winning Mabel Crawford's Bistro.

Cork's Vienna Woods use only Irish-sourced ingredients and are proudly accredited Guaranteed Irish, which highlights their commitment to supporting local communities and local producers. The hotel also offers eight luxurious, self-catering villas, each with 4 en-suite double bedrooms, a fully-equipped kitchen and underfloor heating. All hotel rooms and villas have complimentary high-speed WiFi.



# Dingle Benners Hotel



Located right in the heart of the beautiful, colourful town of Dingle, renowned for its old world charm and ambience.



18

**GENERAL MANAGER**  
John Foley

FÁILTE IRELAND  
★★★★

**ROOMS — 52**  
OPEN: All year  
(excl. 11th–26th December)  
B&B from €60 pps  
Dinner from €49

**ADDRESS**  
Main Street,  
Dingle, Co. Kerry  
V92 FTK2

T +353 66 915 1638

As the oldest hotel in Dingle, Dingle Benners Hotel has been welcoming guests since the early 1800s. Steeped in history and charm, this beloved landmark has hosted many of the town's most legendary visitors over the years. Today, it continues to offer the same warm hospitality and inviting atmosphere that have made it a cherished part of Dingle's story.

Tucked away in the heart of town, Dingle Benners is more than just a place to stay — it's a peaceful retreat with character, tradition, and an authentic Irish experience at its core. Centred around 52 guest rooms, the rooms include a selection of classic, superior, family rooms and four poster guest rooms which offer you a calming haven to celebrate that special occasion, or as a restful base for your Dingle trip.

The hotel also offers complimentary guest parking allowing you to discover this exciting town by foot. Mrs Benners Bar offers an extensive menu daily, afternoon tea and a wonderful choice of cocktails featuring locally distilled favourites such as Dingle Gin and Vodka. The hotel is an ideal base to explore the amazing Dingle Peninsula on the beautiful Wild Atlantic Way, an area rich in Irish heritage and culture as well as natural beauty.





# The Dunraven Adare



A stylish luxury country house set in the picturesque village of Adare in County Limerick



19

**PROPRIETOR**  
Hugh Murphy

FÁILTE IRELAND  
★★★★

**ROOMS — 86**  
OPEN: All year  
B&B from €85 pps  
Dinner from €65

**ADDRESS**  
Adare,  
Co. Limerick  
V94 KV2P  
T +353 61 605 900

The Dunraven, established in 1792, is an oasis of tranquillity in Adare, Co Limerick, surrounded by mellow thatched cottages and offering the ambience of a country house combined with first-class service and friendly efficient staff.

The Dunraven welcomes you to 86 bedrooms, including six suites, 24 junior suites and 53 beautiful executive rooms, all beautifully appointed with antique furniture, private dressing rooms and en-suite bathrooms. The leisure centre has a 17m pool, beauty rooms, steam room and gymnasium. The activities available locally include two top-quality golf clubs, equestrian activities and fishing.

The Dunraven, privately owned by the Murphy Family, prides itself on the personal service and attention to detail for all its guests. Winner of the ‘Georgina Campbell Hotel of the Year’ on 2 occasions. Special packages available and open all year round.



# Fitzgeralds Woodlands House Hotel & Spa



A family-run hotel set on the edge of Adare, with superb hospitality and facilities. Fitzgeralds Woodlands is ten minutes from Limerick City and 25 minutes from Shannon Airport.



20

**PROPRIETORS**  
The Fitzgerald Family

FÁILTE IRELAND  
★★★★

**ROOMS — 96**  
OPEN: All year  
(excl. 24th & 25th December)  
B&B from €135 pps  
Dinner from €50

**ADDRESS**  
Knockanes, Adare,  
Co. Limerick  
V94 F1P9  
T +353 61 605 100

Situated on 40 acres of organic grounds, this is a family run resort dedicated to creating lifetime memories. It's the perfect base to explore local counties and the Wild Atlantic Way.

The hotel offers a choice of deluxe, superior and executive suites. Guests can choose to enjoy the relaxing atmosphere of Timmy Mac's Bistro, serving the best of local produce from the organic garden or the award-winning outdoor dining venue, The Treehouse featuring The Treehouse Pizza Cabin, SCOOPS Ice Cream, Treehouse Food Cabin and Treehouse Bar.

Guests will have full use of the white flag leisure centre facilities comprising of a 20m pool, health suite, with sauna, steam room and jacuzzi, fully equipped gym and 1.2km walking/running trail. For younger guests, Woody's Fun Club runs seasonally and includes a Fairy Trail, garden tour experiences, Scavenger Hunts, mini pet farm and children's play area. Indulge yourself at the award-winning spa, Revas, which offers a complete suite of relaxation and personal care packages and includes thermal suite and a relaxation area.

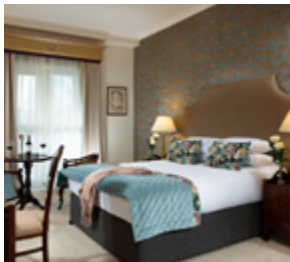
The hotel, is dedicated to becoming a global leader in sustainable tourism. Their vision is to become a carbon-neutral hotel by implementing sustainable practices across all areas.



# Fitzpatrick Castle Hotel



Nestled at the brow of Killiney Hill with breathtaking views over Dublin Bay, Fitzpatrick Castle Hotel blends historic charm with modern luxury.



21

**PROPRIETORS**  
Mark & Joseph  
Scott-Lennon

FÁILTE IRELAND  
★★★★

**ROOMS — 113**  
OPEN: All year  
B&B from €79 pps  
Dinner from €45

**ADDRESS**  
Killiney, Co. Dublin,  
A96 N125  
T +353 1 230 5400

This family-run 18th-century castle offers elegant accommodation, award-winning dining, and warm Irish hospitality. Guests can unwind in beautifully appointed rooms, enjoy seasonal Irish cuisine at Mapas Restaurant, indulge in Afternoon Tea in the Library Bar, or relax at The Club, featuring a 20-metre indoor pool and leisure centre. With scenic coastal walks, Killiney Beach, and Dalkey Village nearby, Fitzpatrick Castle is the perfect escape for romantic getaways, family breaks, weddings, or corporate events — where timeless elegance meets unforgettable experiences.

Located just moments from Killiney Hill, Dalkey Village, and several iconic sea swimming spots, guests can effortlessly combine outdoor adventure with castle comfort. It's the perfect balance of relaxation, recreation, and breathtaking coastal scenery. One of the most unique experiences at Fitzpatrick Castle Hotel is the opportunity to play on their outdoor padel courts – they're proud to be one of the only hotels in Dublin offering this exciting and fast-growing sport. Whether you're a seasoned player or trying it for the first time, it's a fun and active way to enjoy your stay.



# Garryvoe Hotel



An impressive coastal location, overlooking one of Ireland's finest beaches in Ballycotton, Co. Cork.

22

**MANAGING DIRECTOR**  
Stephen Belton

FÁILTE IRELAND  
★★★★

**ROOMS — 82**  
OPEN: All year  
(excl. 24th–25th December)  
B&B from €85 pps  
Dinner from €50

**ADDRESS**  
Castlemartyr, Co. Cork  
P25 DR94  
T +353 21 464 6718

At the Garryvoe, they believe some things should never change: that is why you will always find a fresh prawn cocktail on the menu, an open fire in the Cave Bar and sincere hospitality without fuss. They concentrate on the little things - oversized bedrooms, heated bathroom mirrors and a celebrated restaurant that offers great cuisine, with fresh seafood a particular speciality.

Garryvoe's coastal location, overlooking one of Ireland's finest beaches in Ballycotton, Co Cork, makes for an ideal holiday destination. The hotel facilities include the Garryvoe Health Club, featuring a 25m lap pool, aqua jogging ring, sauna, steam room, gym, and outdoor hot tub. This beautiful area of Cork has an abundance of sporting and leisure pursuits for guests, including golf, hiking, horse-riding and Irish heritage sites.

Don't miss a visit to Fota Wildlife Park, Cobh Queenstown Story & Titanic Experience, The Jameson Experience in Midleton and Europe's award winning attraction Spike Island just 20 minutes' drive away. There are also breathtaking sea view walks on their doorstep including Ballycotton and Knockadoon offering routes for the experienced and leisurely walker!





TOURING ITINERARY NO.2

# Wander through history

When you explore Ireland's Ancient East, you wander through 5,000 years of history in the land of legends.

In these lush, green lands, tales of feuding dynasties hide behind crumbling Gothic architecture; ghostly tombs predate the pyramids; and knights, kings, monks and Vikings loom large in incredible stories.

Climb atop the same hills where high kings sat and the light of St Patrick's fires flickered. Stay in the many Original Irish Hotels nestled into this timeless landscape and uncover its ancient secrets.



Day 1 — DUBLIN TO MEATH

Travelling north from Dublin heading straight for some of Ireland's Neolithic structures and through hills and valleys that played a part in battles that shaped Medieval Ireland.

Built in 3200 BC, Newgrange, passage tomb is older than the pyramids and just as mysterious – and the secret it reveals each year on the winter solstice is extraordinary.

The location of the Battle of the Boyne is the townland of Oldbridge which is just west of Drogheda.

Also visit the market town of Kells which is famous as the location which gave its name to the 'Book of Kells'. And a visit to the Boyne Valley isn't complete without seeing Trim Castle which is the largest Anglo Norman castle in Ireland.

Stay at:

8	Bellingham Castle	p21
11	Buswells Hotel	p24
12	Cabra Castle Hotel	p25
21	Fitzpatrick Castle Hotel	p38
23	Headfort Arms Hotel	p44
33	Luttrellstown Castle Resort	p54



Day 2 — WICKLOW

Continue to explore Ireland's Ancient East with a visit to what is affectionately known as the sunny south east and Co. Wicklow, known as the Garden of Ireland. Within the Wicklow National Park there are numerous sights & parks. Glendalough National Park is a stunning valley featuring a monastic settlement founded by St. Kevin in the 6th century.

The harshness of prison life in the 18th Century, the passion of the 1798 rebellion, the cruelty of the transportation ships and hope of a new life in Australia can all be experienced in Wicklow Gaol.



Stay at:

9	BrookLodge & Macreddin Village	p22
---	--------------------------------	-----

Day 3 — CARLOW & KILKENNY

As you leave Wicklow, the next leg of your journey will allow you to explore the leafy Carlow countryside, where towering mountain ranges and meandering rivers provide a postcard-perfect backdrop.

Why not take in a visit to Jerpont glass or travel along the river Barrow to the historic ruins at St Mullins.

Make your way south towards the historic Medieval city of Kilkenny, with its many boutiques, artisan craft shops and fabulous restaurants. The jewel in the crown of this bustling city is its castle which stands at its heart.

Stay at:

- 5 Avalon House Hotel p18
- 38 Pembroke Kilkenny p63



Day 4 — TIPPERARY & CORK

A short journey will see you enter the Golden Vale of Ireland where you will reach Cashel and undoubtedly see the Rock of Cashel, one of the most impressive medieval sites on the island of Ireland, which dominates the surrounding town land.

After a step into the past in Cashel, you will make your way towards Blarney to visit the castle and Woollen Mills. Blarney Castle near Cork City is perhaps most famous for the Blarney Stone. According to legend, the stone has the power to give anyone who kisses it the 'gift of the gab' (or the ability to be a smooth talker).



Take a trip through Cork, taking in castles, forts and heritage buildings along the way. Notably Cork City Gaol, Blackrock and Barryscourt Castles, Cobh and the Titanic Story which in 1912 was the last port of call for the ill-fated Titanic. Arrive at the coastal location of Ballycotton with its cosy harbour side contrasting with its wild Atlantic cliff side, giving variety in scenery and climate. Here, enjoy the view out at Ballycotton Lighthouse, explore the rugged coastline on the cliff walk, or enjoy a swim off Ballycotton Pier.



Stay at:

- 7 Bayview Hotel p20
- 17 Cork's Vienna Woods Hotel p34
- 22 Garryvoe Hotel p39







# Headfort Arms Hotel



The warmest of welcomes awaits guests, just 45 minutes outside the capital, in the heart of the historic Boyne Valley.



23

**PROPRIETORS**  
Duff Family  
**FÁILTE IRELAND**  
★★★★

**ROOMS — 45**  
OPEN: All year  
(excl. 25th December)  
B&B from €60 pps  
Dinner from €40

**ADDRESS**  
Headfort Place, Kells,  
Co. Meath  
A82 D2C1  
T +353 46 924 0063



The Headfort Arms Hotel in Kells, County Meath, once the townhouse of the Marquis of Headfort has been in the hospitable hands of the Duff family for over a century. The warmest of welcomes awaits guests just 45 minutes outside the capital, in the heart of the historic Boyne Valley and home of the eponymous Book of Kells.

The Headfort is the perfect base from which to explore not only the UNESCO World Heritage Site of Brú na Boinne but also to delve into 5,000 years of heritage in the Boyne Valley birthplace of Ireland's Ancient East. Relaxed and designed for comfort, The Headfort offers an array of options for guests, from the embrace of the open fire in the Headfort Lounge, to hearty classics at Café Therese or well deserved pampering at the Headfort Spa Rooms, this is a hotel that hums with activity.

Enjoy award-winning dining and inventive dishes at the Vanilla Pod Restaurant or bask in the atmosphere of an authentic Irish Pub at the Keltic Bar, right in the heartland of mythical Ireland. The Headfort is surrounded by great local festivals and in close proximity to the family fun of Emerald Park or Causey Farm and the top-rated 36-hole golf complex at Headfort Golf Club.



# Hylands Burren Hotel



Located in the centre of the unspoiled and picturesque village of Ballyvaughan, surrounded by the mystical Burren landscape.



24

**PROPRIETORS**  
Quinn Family  
**FÁILTE IRELAND**  
★★★★

**ROOMS — 32**  
OPEN: All year  
B&B from €65 pps  
Dinner from €39.95

**ADDRESS**  
The Square,  
Ballyvaughan, Co. Clare  
H91 EY00  
T +353 65 707 7037



Hylands Burren Hotel is located on the midpoint of the Wild Atlantic Way, in the centre of the picturesque coastal village of Ballyvaughan and surrounded by the UNESCO designed Burren & Cliffs of Moher Geopark. Dating back to the early 19th century, the hotel is owned and managed by the local Quinn family. Guests will find all the comforts of a modern hotel along with the old style character to ensure a memorable stay.

A leading member of the Burren Ecotourism Network and the Burren Food Trail, the hotel's menus include the very best fresh local ingredients. The Fountain bar regularly hosts live music sessions with some of the best musicians in the country performing. The perfect base for a wide variety of outdoor activities, discovering the unique Burren landscape, or going underground in Aillwee and Doolin Caves.

Visit the spectacular Cliffs of Moher a short drive away, take breath taking boat trips to the Aran Islands, or take a day trip to Galway city and Connemara going north or to West Clare and Kerry in the south.



# Killeavy Castle Estate



A luxury retreat nestled in the heart of County Armagh set amidst 365 acres of breath-taking countryside on the slopes of majestic Slieve Gullion

25

**DIRECTOR OF HOSPITALITY**  
Adrian Martin

TOURISM NI  
★★★★

**ROOMS — 60**  
OPEN: All year  
B&B from £110 pps  
Dinner from £60

**ADDRESS**  
12 Ballintemple Road,  
Killeavy, Newry,  
Co. Armagh  
BT35 8LQ  
T +44 28 3044 4888



Killeavy Castle Estate is a luxury 4\* retreat nestled on the slopes of Slieve Gullion in the heart of County Armagh, with panoramic views across the Ring of Gullion, an area of outstanding natural beauty. Their sustainable luxury accommodation includes 45 guestrooms in the hotel, 4 guestrooms in the magnificently restored 19th century castle and 11 guestrooms across their three charming self-catering residences.

Located just 7 minutes outside Newry City and one hour from both Belfast and Dublin Airports, making it Northern Ireland's top sustainable luxury hotel and spa destination. Relax and recharge at the Elemis Spa boasting 7 treatment rooms, swimming pool and thermal spa facilities and explore the woodlands and trails of the estate on foot or by e-bike. Dine in Gullion at Killeavy, an AA rosette, award winning restaurant or à la carte in Calliagh Berra Bistro and Bar. A carbon positive estate with a unique farm to fork ethos.

Enjoy the freshest local produce from their on-site farm and gardens or sustainably sourced from the local region. Killeavy Castle Estate offers a welcoming and authentic experience where luxury accommodation and service are paired with the heritage, culture and myths of Slieve Gullion and County Armagh.

BOOK NOW: [originalirishhotels.com](https://www.originalirishhotels.com) | T +353 1 295 8900



# Killeen House Hotel & Rozzers Restaurant



A charming hotel located close to Killarney, one of Ireland's most vibrant towns.

26

**PROPRIETOR**  
Patrick Eviston

FÁILTE IRELAND  
★★★★

**ROOMS — 27**  
OPEN: March–December  
B&B from €90 pps  
Dinner from €45

**ADDRESS**  
Aghadoe, Killarney,  
Co. Kerry  
V93 WR04  
T +353 64 663 1711



Killeen House Hotel looks forward to welcoming you to their charming and beautiful country house hotel. Relax in the manicured gardens overlooking Killarney national park, yet only a short drive from town. Killeen House was newly refurbished in 2024, but their friendly and professional service remain.

Don't miss the opportunity to dine in Rozzers Restaurant offering an award-winning dining experience with locally sourced cuisine. They also serve tasty food and beverages in the bar. Stay in the well-appointed classic rooms, or for something more special try the deluxe rooms with king sized beds, air conditioning and superior furnishings. All guests can avail of complimentary Wi-Fi and parking. They look forward to exceeding your expectations at Killeen House.

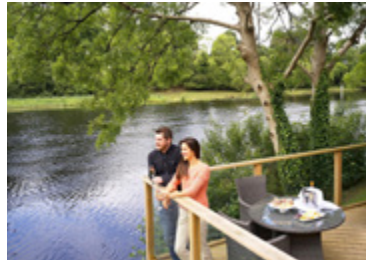
BOOK NOW: [originalirishhotels.com](https://www.originalirishhotels.com) | T +353 1 295 8900



# Killyhevlin Lakeside Hotel & Lodges



A scenic lakeside setting with picturesque gardens and stunning views of Fermanagh Lakelands on the doorstep of the thriving town of Enniskillen.



27

## GENERAL MANAGER

David Morrison

TOURISM NI

★★★★

## ROOMS — 71

OPEN: All year  
(excl. 24th–25th December)

B&amp;B from £75 pps

Dinner from £35

(excl. service charge)

## ADDRESS

Killyhevlin, Enniskillen,

Co. Fermanagh

BT74 6RW

T +44 28 6632 3481



Idyllically set on the shores of scenic Lough Erne, guests can enjoy a lakeside stroll around the private grounds featuring a jetty and gardens and explore nearby Enniskillen, Ireland's only island town located just 1km away. It is the ideal base to experience Fermanagh's unique attractions, waterways, heritage and a gateway to explore the Wild Atlantic Way. All bedrooms have been individually designed and decorated to an exceptional standard. Kove Restaurant offers diners an extensive Table d'Hôte menu, while bar food, carvery lunch and snacks are served daily in the Lakeside Grill.

Guests can enjoy a luxurious home-from-home experience staying in one of the Self-Catering Lakeside/Woodland Lodges or Studios dotted along the banks of Lough Erne, some of which have private hot tubs.

Residents can enjoy full use of the exclusive health club, boasting indoor pool, sauna, steam room, jacuzzi, outdoor hot tub, gymnasium, or pamper themselves with a luxury Elemis treatment at Kalm Spa, complete with a relaxation room. Try a game of Padel, one of Europe's fastest growing sports on the new purpose-build course. Guest can also choose to indulge in Afternoon Tea overlooking Lough Erne. Golf, horse-riding and cruising are available locally.



# Kilronan Castle Estate & Spa



The castle seamlessly mixes the elegance, sophistication and tradition of the past with the luxury and comfort of the modern era.

28

## GENERAL MANAGER

Andrew McGovern

FÁILTE IRELAND

★★★★

## ROOMS — 85

OPEN: All year  
(excl. 24th & 25th December)

B&amp;B from €63 pps

Dinner from €68

## ADDRESS

Ballyfarnon, Boyle,

Co. Roscommon

F52 R867

T +353 71 961 8000



Kilronan Castle Estate & Spa, one of Ireland's most luxurious Castle Hotels, is nestled in County Roscommon. This multi-award-winning property was recently honoured as Ireland's 4-Star Hotel of the Year 2024. Once the ancestral home of the Tennyson family and the renowned Colonel King Tennyson, it seamlessly blends historic charm with modern luxury. This secluded, luxury, castle hotel is majestically set on the shores of Lough Meelagh, surrounded by over forty acres of breathtaking Irish scenery, lush green pastures, ancient forests and historical points of interest. Also featuring a world class spa & leisure centre. Relax and unwind in the pool or let them pamper you with one of their luxurious treatments.

The 2AA rosette & Gold Medal Award winning Douglas Hyde Restaurant offers both à la carte & tasting menus using all locally sourced & home grown produce from their walled gardens which also compliment their vegan & vegetarian menus. Their commitment is to provide the highest level of luxury, comfort and service. You will enjoy old world elegance with modern day comforts. One step inside Kilronan Castle, Roscommon and you are at home. With their warm and friendly atmosphere they will see to your every need, everything has been designed with your desires in mind.



# Kiltimagh Park Hotel



A great base to tour the West of Ireland, with an excellent reputation for good food using fresh and locally sourced ingredients.



29

**PROPRIETOR**  
Claire Brogan

FÁILTE IRELAND  
★★★★

**ROOMS — 46**  
OPEN: All year  
(excl. 22nd–28th December)  
B&B from €69 pps  
Dinner from €49.50

**ADDRESS**  
Swinford Road,  
Kiltimagh, Co. Mayo  
F12 NY17  
T +353 94 937 4922



A warm welcome awaits you at the Park Hotel. Upon arrival, you will find a luxurious hotel set on its own grounds on the outskirts of Kiltimagh, Co Mayo. Kiltimagh Park invites you to rest and rejuvenate in their rural and tranquil environment.

The hotel's rooms are beautifully appointed, offering you space to unwind and relax with beautiful views of the landscape. This charming hotel offers you a comfortable lobby, open plan bar & restaurant 'Chapter 23', proudly serving you the best of local produce.

Kiltimagh Park makes for a perfect base to tour the picturesque west coast, with an abundance of cultural, spiritual, adventure and heritage attractions on the doorstep just waiting for you to explore. The hotel is just 15 km from Knock Airport, and also has train and bus stations just a short distance away. They look forward to welcoming you.



# Knockranny House Hotel & Spa



Set in secluded grounds overlooking the picturesque town of Westport, with breath-taking views of Clew Bay and the Nephin Mountains.



30

**PROPRIETORS**  
Adrian & Geraldine Noonan

FÁILTE IRELAND  
★★★★

**ROOMS — 97**  
OPEN: All year  
(excl. 20th–26th December)  
B&B from €75 pps  
Dinner from €59

**ADDRESS**  
Westport, Co. Mayo  
F28 X340  
T +353 98 286 00

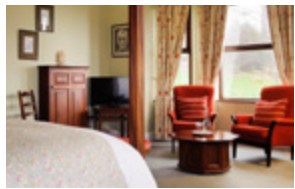
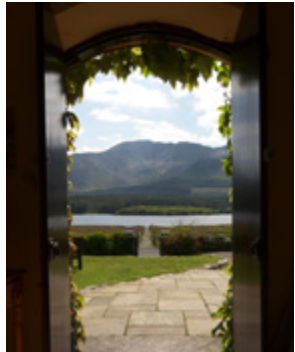


Beautifully-appointed on secluded grounds overlooking the picturesque Co Mayo town of Westport, with wonderful views of Croagh Patrick, the islands of Clew Bay and the Nephin mountain range, Knockranny House Hotel is a proper destination hotel. Knockranny is busy and beloved, with a welcoming atmosphere that begins with the open log fires in the reception hall and is carried throughout the property. The hotel's antique furniture, excellent spa facilities, superb cuisine and friendly service create a genuine sense of relaxed warmth and hospitality.

The Fern Grill, the exquisite restaurant, has achieved many awards and accolades, including 2AA Rosettes for culinary excellence. Spa Salveo is the deluxe and elegant spa at Knockranny House, offering visitors a calming atmosphere, professional service and superb facilities.



# Lough Inagh Lodge Hotel



The hotel rests on the tranquil shores of Lough Inagh, a perfect haven for complete rest, relaxation, and romance.



31

**PROPRIETOR**  
O' Connor Family

FÁILTE IRELAND  
★★★★

**ROOMS — 13**  
OPEN: March–December  
B&B from €97.50 pps  
Dinner from €60

**ADDRESS**  
Recess, Connemara,  
Co. Galway  
H91 E3Y8  
T +353 95 34706

Picture a deep quiet valley, a lake at your feet, a mountain behind you, a welcome ahead of you. Lough Inagh Lodge is set snugly in the aptly named Recess of Connemara, Co Galway. Though it is by no means a small house, Lough Inagh Lodge is yet dwarfed by the magnificent scale of the landscape.

This is a charming country retreat with 13 tastefully appointed rooms, five of them furnished to deluxe standard. Originally a fishing lodge of the Berridge family, Lough Inagh Lodge echoes that tradition in superb menus based on Connemara lamb, fish and seafood, along with other local produce.

In addition to excellent fly fishing, activities include pony-trekking, hill climbing and walking: the hotel provides an excellent guidebook of recommended walks. If golf or sea sports are your pleasure, they are within easy driving distance.



# Lough Rynn Castle Estate & Gardens



This luxurious historic Irish Castle is surrounded by over 300 acres of lush green pastures and ancient forests in the heart of county Leitrim.

32

**GENERAL MANAGER**  
Eoin O' Sullivan

FÁILTE IRELAND  
★★★★

**ROOMS — 44**  
OPEN: All year  
B&B from €169 per room  
Dinner from €64

**ADDRESS**  
Mohill, Co. Leitrim  
N41 WE16  
T +353 71 963 2700

Lough Rynn Castle Estate & Gardens is one of the top luxury castle hotels to stay in. Lough Rynn Castle exceeds expectations as one of the most preferred hotels in Ireland. Staying in a luxurious castle hotel in Ireland is a once in a lifetime experience and one that deserves to take place at a location full of history, luxury and charm. Take a step back in time as you approach imposing entrances offering acres of breathtaking scenery, historical sites and walled gardens. Their award-winning food offers a variety of dishes using locally sourced ingredients, from the fine dining Sandstone Restaurant to a more casual experience in the Drawing rooms. The secluded hotel also offers guests a range of outdoor activities close by, such as kayaking, fishing, water sports, cycling, horse riding and more. Book a stay in one of the classic rooms or authentic suites at this luxurious castle hotel and treat yourself to a once in a lifetime experience. Enjoy the scenic surroundings of the tranquil woodland and lakeshore. Awarded Best Customer Experience – Hotel Category 2023, Fine Dining Experience of the Year 2023, Romantic Hotel of the Year 2024 - Irish Hotel Awards, Bronze - Ireland's Small Wedding Venue - Gold Medal Awards 2024 and Overall Wedding Venue for 2025 - Weddingsonline.



# Luttrellstown Castle Resort



Situated in the heart of a sprawling 567-acre private estate, Luttrellstown is a magnificent 15th-century castle offered for hire on an exclusive basis.

33

**CHIEF EXECUTIVE OFFICER**  
Ivan King  
★★★★★  
**ROOMS — 25**  
OPEN: All year  
Exclusively private rental  
**ADDRESS**  
Castleknock,  
Dublin 15  
D15 RH92  
T +353 1 86 09 600

Immerse yourself in the enchanting ambiance of our 560-acre estate with a unique and exclusive experience at Luttrellstown Castle Resort. The venue includes the historic Castle, the charming Gardener's Cottage, and the elegant Salon, all available for your exclusive hire. The Castle boasts two stunning function spaces: the Van Stry Ballroom and the Kentian Room. With 20 individually designed bedrooms within the Castle and an additional 5 bedrooms in the Gardeners Cottage just minutes away, guests can indulge in comfort and luxury throughout their stay.

The magnificent and world-renowned 15th Century Luttrellstown Castle is bursting with character and style and is offered on a fully exclusive basis, allowing for complete privacy. Within the resort lies an immaculate 18-hole championship golf course, befitting a country in the top tier of global golfing destinations, along with its impressive alpine lodge-style clubhouse.



# Markree Castle



Spectacular 17th Century Authentic Irish Castle located in County Sligo on a 500-acre estate, exuding elegance and the definition of luxury.

34

**MANAGEMENT**  
Nicholas & Deirdre Ryan  
**FÁILTE IRELAND**  
★★★★★  
**ROOMS — 31**  
OPEN: All year  
Exclusive private hire also available (excl. 24th–26th December)  
B&B: from €130 pps  
Dinner from €65  
**ADDRESS**  
Collooney, Co. Sligo  
F91 AE81  
T +353 71 916 7800

It is hard to imagine a destination with more romance, character, and elegance than Markree Castle. This authentic Irish castle venue is nestled in the stunning North West of Ireland in County Sligo on the route of the world famous Wild Atlantic Way. A fairy-tale pairing of elegance and exemplary service, Markree Castle has a relaxed atmosphere, picture-perfect 500-acre grounds and 31 exquisite en-suite castle bedrooms which are simply the epitome of luxury.

Wander through the castle, enjoying the blazing fire in the Grand Hall, period features and furnishings, and the breath-taking inter-linked dining rooms creating that authentic, old-world charm to instantly transport you back in time.

Markree Castle opens for select B&B dates throughout the year and is also one of Ireland's leading luxury wedding and event venues. With rich décor, indulgent dining, picturesque views, and magnificent bedrooms, now is your opportunity to discover the magic of Markree Castle and experience true luxury in a majestic 17th Century authentic Irish Castle.





## TOURING ITINERARY NO.3

# Northern wonders & Ireland's hidden heartlands

Explore the ruins of a 16th-century clifftop castle that's crumbling into the sea, cross a hair-raising rope bridge to a rugged island, and discover the geological wonders of the Giant's Causeway.

Travel south to then discover the heartbeat of Ireland and uncover the tracks, trails and sails of Ireland's Hidden Heartlands.



## Day 1 & 2 — BELFAST AND THE CAUSEWAY COAST

Start your trip with a visit to the historic city of Belfast. This shipping city houses the famous Titanic experience in the city where the fateful ship was built. Head northwards on the Causeway Coastal Route enjoying the breathtaking scenery on this award winning route before arriving in the picturesque village of Glenarm where you can visit Glenarm Castle, one of Ireland's oldest estates, with its splendid walled gardens and vivid blooms.

### Stay at:

- |    |                                |     |
|----|--------------------------------|-----|
| 10 | Brown Trout Golf & Country Inn | p23 |
| 25 | Killeavy Castle Estate         | p46 |



Returning to the coast why not discover Glenariff (Queen of the Glens) with its forest park where you can enjoy one or more of the four walking trails in this fairytale landscape of leafy glades and tumbling waterfalls.

Continuing Northwards make sure you take the Causeway Coastal Route to Ballycastle, visiting Cushendun, the Vanishing Lake before taking the Torr Road with its spectacular views to Rathlin Island and Scotland beyond. After leaving Ballycastle take in the stunning scenery before arriving at Carrick-a-Rede Rope Bridge suspended across a 20-metre chasm.

From Carrick-a-Rede, it's just a short hop to the UNESCO World Heritage Site, the magnificent Giant's Causeway. En route to the Causeway, be sure not to miss two of the region's prettiest harbours, Ballintoy (featured in the Hit TV show Game of Thrones) and Portbradden, nestled in the shadow of Whitepark Bay. Just 1 mile from the Giant's Causeway is Bushmills, home to the world famous Whiskey Distillery.



Stay at:

4	Arnolds Hotel	p17
35	Mill Park Hotel	p60
41	Sandhouse Hotel	p66

Day 3 — COASTAL ROUTE

Still on the Causeway Coastal Route, on the approach to Portrush, is Dunluce Castle, perched precariously on the cliff top overlooking this seaside resort. One of the most iconic and historic images in Ireland, the castle dates back to the 14th century.

Head towards Limavady, passing by Castlerock. Look out for Hezlett House and the glorious Mussenden Temple, the cliff top folly is said to have been inspired by the Temple of Vesta at Rome. As you near Limavady look out for the breathtaking view of Binevenagh Mountain.

Next stop on the Itinerary is the Walled city of Derry/Londonderry. Take time to enjoy a walking tour of the walled city including the Peace Bridge.

Day 4 — LAKELANDS

Travel South to the lakelands of Enniskillen and be sure to include a stop at Belleek Pottery on the way. Take in a tour of Florence Court House a majestic 18th century Irish house furnished with the original family collection. Fermanagh is also where you will find Castle Coole one of Ireland's finest Neo-classical houses boasting fine architecture and opulent interiors.



Day 5 — ENNISKILLEN TO THE HIDDEN HEARTLANDS

An energetic start to the day with a scenic walk on the Cuilcagh Boardwalk Trail which has been named the stairway to heaven. A subterranean world awaits with a visit to the nearby Marble Arch Caves. Alternatively try out the mining experience in the Arigna Mines in County Leitrim. Here you will get a visit accompanied by the miners who worked in these mines up until the working mines closed in 1990.

Those seeking adventure or a trip on the lakes should take in Lough Key Forest Park.

Stay at:

27	Killyhevlin Lakeside Hotel & Lodges	p48
----	-------------------------------------	-----



Stay at:

28	Kilronan Castle Estate & Spa	p49
32	Lough Rynn Castle Estate & Gardens	p53
45	The Slieve Russel Hotel Golf & Country Club	p70

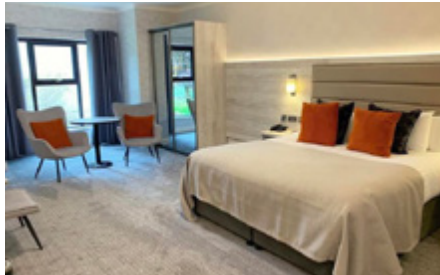




# Mill Park Hotel



Situated just outside the historic town of Donegal, the hotel's location makes it the perfect holiday base to discover Ireland's North West



35

**PROPRIETORS**

Tony McDermott  
& Niamh Gallagher

**FÁILTE IRELAND**

★★★★

**ROOMS — 110**

OPEN: All year  
(excl. 23rd–26th December)  
B&B from €100 pps  
Dinner from €50

**ADDRESS**

The Mullins, Donegal  
Town, Co. Donegal  
F94 HD99  
T +353 74 972 2880



The Mill Park Hotel is a luxurious 4-star hotel located a mere 10 minutes' walk from historic Donegal Town. The hotel is set within 7 acres of manicured lawns, walks and gardens, and has ample free parking.

The interior is a design fusion of traditional and contemporary styles, with the old stone walls, open fires and exposed beams in the Granary Foyer being the focal point.

The hotel offers a choice of deluxe rooms, family rooms and junior or superior suites. Each bedroom has been designed with comfort, style and convenience in mind. The hotel also offers leisure club facilities including an indoor swimming pool, children's pool, steam room, jacuzzi and gymnasium.

Guests can enjoy dining in the excellent Chapter Twenty restaurant, which specialises in local fresh produce cooked with care, flair and real imagination.



# Mount Falcon



Mount Falcon is a perfect hideaway for your luxury short break or holiday in the West of Ireland

36

**PROPRIETOR**

Alan Maloney

**FÁILTE IRELAND**

★★★★

**ROOMS — 32****LODGES — 45**

OPEN: March–December  
(excl. 25th–26th December)  
B&B from €160 pps  
Dinner from €45

**ADDRESS**

Foxford Road, Ballina,  
Co. Mayo, F26 H744  
T +353 96 744 72



The 100-acre parkland estate, enveloped in mature deciduous woodland, is located along the River Moy, Ireland's most prolific salmon river. Mount Falcon offers authentic Irish hospitality conveniently located along the Wild Atlantic Way. The hotel features 32 bedrooms, including suites and deluxe rooms in the original manor house which date back to 1876, and forty-five 3 & 4 bedroom lodges.

Mount Falcon is home to Tom Doyle's Kitchen Restaurant featuring the best steak & seafood along the western seaboard. Chef Tom's in-house dry aged beef programme pairs perfectly with seasonal offerings of local produce, elegant starters, familiar sides, and wine from the cellar.

Guests can wind down in the spa and leisure centre with professional treatments or just relax in the pool, Jacuzzi, steam room and sauna. Outdoor enthusiasts can take advantage of two miles of private fishing on the River Moy or by teeing off at one of the three nearby world class links golf courses. The estate is also home to a working falconry, woodland walking trails, a trout fishing lake and clay pigeon shooting range.



# Parknasilla Resort & Spa



Nourish your senses in this beautiful place along the Wild Atlantic Way.



37

**GENERAL MANAGER**  
Donald Morriessy

FÁILTE IRELAND  
★★★★

**ROOMS — 85**  
**LODGES — 24**  
OPEN: 7th March  
–22nd November  
23rd December–3rd January  
B&B from €130 pps  
Dinner from €65

**ADDRESS**  
Sneem, Co. Kerry  
V93 EK71

T + 353 64 667 5600



Nourish is about moments. Evocative, visceral moments that resonate deeply and emotionally. Moments that make you feel warm. Moments that stay with you and populate your memories.

Parknasilla Resort & Spa is full of these moments. It's stunning location; the seemingly boundless grounds with tracks and trails that wind tantalisingly on and on, the ocean; wild yet comforting, that laps and crashes over the rocky outcrops and rattling pebbles alike, the food; tasty, generous and satisfying, the activities; jumping off piers into the sea, drifting aimlessly in a kayak and unwinding in the lounge; eyes moving from the page of a book to look at the raw Atlantic coastline through the window, the mind unfurling in reflection, the rooms; unpretentious, cosy, quietly luxurious and time to revive your senses in the ocean side spa.



# Pembroke Kilkenny



A relaxing 4-star boutique hotel in the heart of Kilkenny, a city rich with medieval heritage and alive with a vibrant arts culture.

38

**PROPRIETOR**  
John Ryan

FÁILTE IRELAND  
★★★★

**ROOMS — 73**  
OPEN: All year  
(excl. 25th December)  
B&B from €75 pps  
Dinner from €55

**ADDRESS**  
11 Patrick Street,  
Kilkenny  
R95 E40W

T +353 56 778 3500



Recently named Ireland's Boutique Hotel of the Year, Pembroke Kilkenny is the perfect base to explore Kilkenny and beyond. Just minutes from Kilkenny Castle and the city's top landmarks, you'll have easy access to its arts and heritage, festivals, shopping, outdoor adventures, and vibrant nightlife. Kilkenny starts here.

Their rooms feature king-sized beds, air conditioning, and the comforts for a good night's sleep with tranquil surroundings. Choose from classic rooms, upgraded rooms with views of Kilkenny Castle, or the newly launched luxury suites for an elevated experience.

Start your day at Stathams Bar & Restaurant with Ireland's Best Hotel Breakfast – Silver Award Winner. Their chef team carefully curates each dish using seasonal ingredients from the best local food producers. Every meal is thoughtfully prepared from breakfast and brunch to lunch, dinner, and special occasions. Dine indoors in a cosy, well-ventilated space or the inviting courtyard.

For relaxation, visit Mint Medispa for expert massages and signature treatments from highly skilled therapists. If you're there for business, 11 Patrick Street, their dedicated corporate centre, provides the perfect setting.

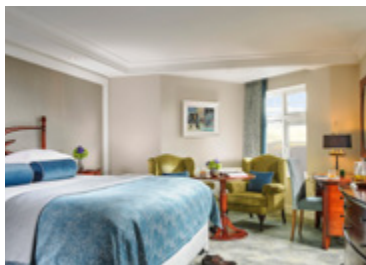




# Randles Hotel



Combining the elegance and comfort of a manor house with the relaxed informality of a boutique hotel, Randles is uniquely accommodating.



39

**PROPRIETOR**  
Tom Randles

FÁILTE IRELAND  
★★★★

**ROOMS — 87**  
OPEN: All year  
B&B from €75 pps  
Dinner from €45  
(excl. service charge)

**ADDRESS**  
Muckross Road,  
Killarney, Co. Kerry  
V93 N264

T +353 64 6635 333



Located just five minutes from the charm and bustle of Killarney Town and its breathtaking National Park, Randles combines the elegance and comfort of a manor house with the relaxed informality of a boutique hotel.

The original Victorian house, dating from 1906, has been sensitively restored to create a series of luxurious and uniquely accommodating spaces, while the modern guest rooms and suites are designed to meet every need of the discerning traveller. The hotel is personally overseen by Tom Randles, who invites you to check in, slow down and enjoy warm hospitality with a sprinkle of indulgence.

Unwind beside the crackling log fire in The Drawing Room, enjoy locally sourced and seasonal small plates and entrées in The Conservatory or choose the strikingly designed Checkers Restaurant for private dining. The stylish and relaxed Wigg's Bar is the perfect spot to retire to for a digestif or when the weather allows enjoy a cocktail on the heated terrace. Kickstart your day with a hot breakfast, cooked to order. A very warm welcome awaits you at Randles.

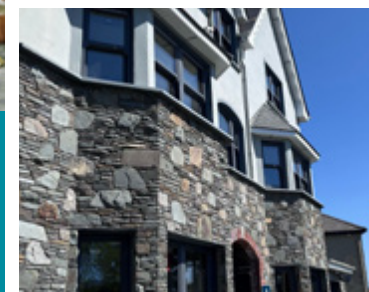
BOOK NOW: [originalirishhotels.com](http://originalirishhotels.com) | T +353 1 295 8900



# Randles Townhouse



Introducing Randles Townhouse – where elegance finds its own address



40

**PROPRIETOR**  
Tom Randles

**ROOMS — 14**  
OPEN: All year  
Room only rate  
from €250  
(Min. 2 night stay)

**ADDRESS**  
Woodlawn Road,  
Killarney  
V93 D9XT  
T +353 64 6635 333



Opening its doors in July 2025, Randles Townhouse is the newest addition to the Randles collection – an adults-only escape nestled in the heart of Killarney. This luxury, gated townhouse, discreetly located 350 metres from Randles Hotel, promises all the warmth and wonder of a hotel with the privacy of your own townhouse.

Each of the individually designed guest rooms are a sanctuary of indulgence; with sumptuous super-king beds, complimentary non-alcoholic mini bars, flickering fireplaces and automated mood lighting. With air conditioning and refined interiors, comfort is crafted down to the last detail.

Step outside and Killarney National Park beckons; yet you are mere moments from the charm of Killarney town. The best of both worlds – your own private retreat with the all of the benefits of Randles Hotel close at hand.

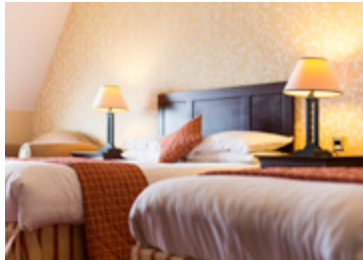
Already named one of the Irish Independent's Fab 50 Places to Stay in 2025, Randles Townhouse is where luxury lingers and memories are made.

BOOK NOW: [originalirishhotels.com](http://originalirishhotels.com) | T +353 1 295 8900

# Sandhouse Hotel



A haven of peace and tranquility on the Wild Atlantic Way, nestled in a quiet corner of County Donegal.



41

**PROPRIETOR**

Paul Diver

FÁILTE IRELAND

★★★★

**ROOMS — 50**

OPEN: All year  
(excl. Christmas)  
B&B From €90 pps  
Dinner From €45

**ADDRESS**

Rosstownagh,  
Co. Donegal  
F94 X56F

T +353 71 985 1777



Perched on the edge of the Atlantic Ocean, overlooking miles of secluded sandy beach in a quiet corner of beautiful Co Donegal, is the Sandhouse Hotel and Marine Therapies. Transformed from a traditional fishing lodge in one of Ireland's most picturesque locations, this superb manor house hotel enjoys superb views across Donegal Bay.

Relax in one of many lounges, pamper yourself in its Marine Therapies Suite, stroll across miles of golden sands, or sample award-winning cuisine from the intimate Glassroom Restaurant.

The Sandhouse Hotel is the ideal base for touring the Wild Atlantic Way including Sliah Liag, Glencolumcille Folk Village and Glenveagh National Park. Superb swimming, surfing and golf links nearby.



An historic country house with a modern fine dining restaurant and spa. Situated on the Wild Atlantic Way perfect for exploring beautiful Connemara.

42

**PROPRIETORS**

Burkart Family

FÁILTE IRELAND

Historic House With  
Accommodation

AA CLASSIFICATION: 5 star  
restaurant with rooms

**ROOMS — 10**

OPEN: March–November  
(Exclusive rental over  
winter season also)  
B&B From €160 pps  
Dinner From €55

**ADDRESS**

Rosmuc, Connemara,  
Co. Galway, H91 X5WY

T +353 91 574110

One of Ireland's finest Victorian country houses now offers you the opportunity to experience the unparalleled tranquillity of Connemara with all the luxurious comforts you would and should expect from an Original Irish Hotel. Sympathetically restored, all rooms are tastefully furnished with antique interiors and original period features. The restaurant is very much at the heart of Screebe and the award winning chef exemplifies the flavours of Connemara's finest produces in their signature tasting and traditional á la carte menus.

If you long for adventure then try a day's fishing on the river and lakes, enjoy one of the many stunning local hikes or take a short boat trip out to the idyllic Aran Islands. Alternatively spend the day in the leisure centre where you can relax by the pool and sauna, avail of a customised massage package or curl up with your favourite book in front of one of the many open fires.

So whether they're the first or last place you stay, they promise to show you a side of Ireland you're yet to experience and give you many, many reasons to return.





# Seaview House Hotel



A delightful manor house hotel set in beautiful gardens on the gateway to the Beara Peninsula.



43

**PROPRIETORS**

Ronan & Suzanne  
O'Sullivan

FÁILTE IRELAND

★★★★

**ROOMS — 25**

OPEN: March–December  
B&B From €120 pps  
Dinner From €65

**ADDRESS**

Ballylickey,  
Bantry, Co. Cork  
P75 N283

T +353 27 50073  
seaviewhousehotel.com



Set within four acres of beautifully manicured and mature gardens set back from the Sea, Seaview House Hotel is West Cork's finest multi-award winning Country Manor Escape. This is a perfect location for discovering some of the world's most spectacular scenery along the Wild Atlantic Way.

Relax after your exploring at their award-winning restaurant, which prides itself on its excellent seafood and locally sourced produce. The Organic Seaweed Bathhouse and Scandinavian Style Spa Garden will also help you relax, and rejuvenate, with seaweed based treatments and scrubs for that extra bit of pampering.

Awarded: 2 AA rosettes for Food, AA3 Red Stars Inspectors choice, AA Courtesy & Care Award, Gilbeys Gold Medal Award for Excellence, Michelin and Good Hotel Guide recommended, Georgina Campbell Host 2017. Pet-Friendly Hotel of the Year 2024.



# Sheedy's Boutique Hotel



Idyllic boutique hotel located in the Burren & Cliffs of Moher Geopark.



44

**PROPRIETORS**

Sheedy Family

FÁILTE IRELAND

★★★★

**Rooms — 11**

Private rental also available  
in low season  
OPEN: Easter–October  
B&B from €120 pps  
Dinner from €70

**ADDRESS**

Lisdoonvarna, Co. Clare  
V95 NH22

T +353 65 707 4026



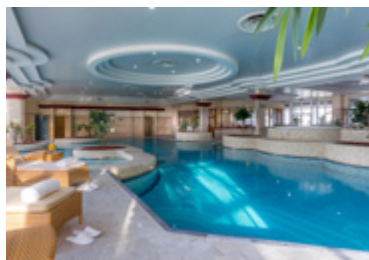
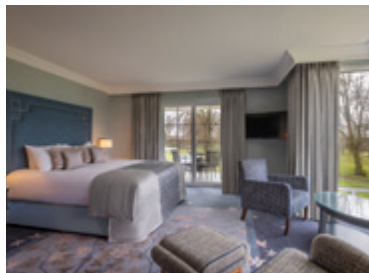
Located in the Burren & Cliffs of Moher Geopark, Co. Clare, just 10km from the Cliffs of Moher, Sheedy's offers a warm welcome, traditional hospitality and award-winning cuisine.

Owned and managed by the Sheedy family, this 18C house is the perfect spot for a break in the Burren. Walkers will be thrilled with the variety of looped walks on the Burren Way and with spectacular views of the Aran Islands from the Cliffs of Moher. Explore the villages of Lisdoonvarna and Doolin, where traditional Irish music can be enjoyed on a nightly basis during the summer.

The Restaurant at Sheedys holds Two Rosettes from AA, and breakfast is not to be missed! Recent Awards for Sheedys include The Good Hotel Editor's Choice for Walking Breaks 2020 and 2022, Breakfast Award from Georgina Campbell, Best Small Hotel 2020 from McKenna Guide.

On the Wild Atlantic Way and just 45 minutes drive from Shannon International Airport. Private, off street car parking available for hotel guests.

# Slieve Russell Hotel, Golf & Country Club



Located in a serene setting, the Slieve Russell is a place to relax and unwind while enjoying the many activities on offer.

45

**GENERAL MANAGER**  
Tony Walker

FÁILTE IRELAND  
★★★★

**ROOMS — 224**  
OPEN: All Year  
B&B from €90 pps  
Dinner from €55  
(excl. service charge)

**ADDRESS**  
Ballyconnell,  
Belturbet, Co. Cavan  
H14 FE03

T +353 49 952 6444



The Slieve Russell Hotel in Co. Cavan provides luxury 4-star hotel accommodation in a tranquil setting. Set in 300 acres, including 50 acres of lakes, the Slieve Russell Hotel Golf & Country Club, with Cíúin Spa & Wellness Centre, offers guests a unique experience in relaxation and leisure.

Choose this Four Star Hotel and avail of all that is on offer – superb leisure facilities, an 18 hole PGA National championship golf course, a nine hole Par 3 course, tennis, or simply relax and unwind with a treatment in the award winning Cíúin Spa.

Explore their enticing choice of dining experiences, offering a tempting selection of cuisines in the Conall Cearnach, Setanta and Summit Restaurants, with seasonal produce and local Irish ingredients.

Located just 90 minutes from Dublin, the Slieve Russell Hotel Golf & Country Club in Ballyconnell, Co. Cavan, is a haven of comfort and relaxation - a place to which you will wish to return again and again.



This hidden gem on the Ring of Kerry is an ideal location from which to explore the region along the Wild Atlantic Way

46

**GENERAL MANAGER**  
Nicola Duggan

FÁILTE IRELAND  
★★★★

**ROOMS — 69**  
OPEN: February–December  
B&B from €65 pps  
Dinner from €55

**ADDRESS:**  
Sneem, Co. Kerry  
V93 XV44

T +353 64 667 5100



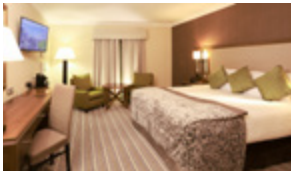
Nestled in the serene beauty of Goldens Cove, Sneem Hotel offers an unparalleled escape with breathtaking views of Kenmare Bay and the majestic mountains beyond. This luxurious property boasts 69 elegantly appointed bedrooms and 28 spacious, self-contained two and three-bedroom apartments and suites. Many of the premium rooms feature expansive balconies, perfect for soaking in the stunning sea vistas. For those traveling with furry companions, you'll be pleased to know that select hotel rooms and all apartments are dog-friendly. Immerse yourself in Sneem's natural beauty with invigorating sea swims, or indulge in their traditional seaweed bath experience.

The on-site dining options, including Fishers Bar and Coastal Restaurant, showcase the finest local ingredients, offering a culinary journey that highlights the flavors of the region. Perfectly positioned on the famous Ring of Kerry on the Wild Atlantic Way, this hidden gem is the ideal base for exploring the area's rich offerings. A short stroll takes you to the quaint village of Sneem, while a scenic drive brings you to the vibrant town of Kenmare, as well as the world-renowned Waterville and Killarney golf courses. For those who love the outdoors, the hotel is an exceptional gateway to the Kerry Way walking trail, offering some of the most spectacular trekking in Ireland.





# Vaughan Lodge Hotel



Vaughan Lodge offers a charming Irish hotel experience in beautiful surroundings.

47

**PROPRIETORS**  
Michael & Maria Vaughan  
**FÁILTE IRELAND**  
★★★★

**ROOMS — 32**  
OPEN: March–October  
B&B from €130 pps

**ADDRESS:**  
Ennistymon Road,  
Lahinch, Co. Clare,  
V95 WF30  
T +353 65 708111



Vaughan Lodge is a modern, boutique hotel, rich in character, situated on the edge of the village of Lahinch. The Vaughan family are 4th generation local hoteliers who pride themselves in providing professional hospitality in a relaxed atmosphere.

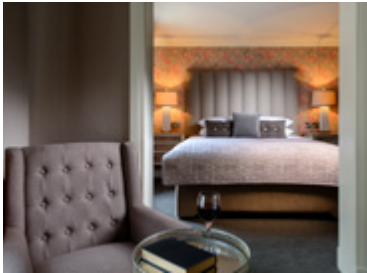
The purpose-built hotel has a comfortable lounge/bar with one of the most extensive collections of Irish Whiskey, Scottish Malts and other spirits from around the world.

Vaughan Lodge offers a charming Irish hotel experience in beautiful surroundings. Bedrooms are well appointed and spacious with special attention to amenities and the needs of the international traveller. Breakfast is a treat each morning, cooked to order by the owner, and is available from 6.30am until 10.00am.

The hotel is ideally nestled on the shore of Liscannor Bay with many places of natural beauty nearby, from the Cliffs of Moher to the lunar like landscape of the Burren.

Activities such as golf can be enjoyed in the area with Links Golf at Lahinch among the top three courses in Ireland. Located only a stroll from the beach, surfing is also a popular local past time. With a selection of pubs, restaurants, shops and activities in the town, there is something for everyone to enjoy!

BOOK NOW: [originalirishhotels.com](http://originalirishhotels.com) | T +353 1 295 8900



A luxury contemporary 4-star boutique hotel, set on the scenic Muckcross Road of Killarney.

48

**PROPRIETORS**  
John & Sinead Courtney  
**FÁILTE IRELAND**  
★★★★

**ROOMS — 33**  
OPEN: January–December  
B&B from €95pps  
Dinner from €45

**ADDRESS**  
Muckcross Road,  
Killarney, Co. Kerry,  
V93 K0FE  
T +353 64 663 5430



The Victoria, Killarney is a luxury contemporary 4-star boutique hotel, set on the scenic Muckcross Road of Killarney, Ireland's most thriving and popular all-year round holiday destination. With 33 elegant and luxurious bedrooms, each of the bespoke rooms are individually appointed and have their own unique character. With contemporary amenities and luxurious bed linen, enjoy a comfortable and restful stay.

Breakfast is served in The Courtyard Restaurant, with an extensive menu served to your table, along with home-made breads and pastries! The Ivy lounge serves a selection of food offerings for both lunch and dinner.

The hotel is ideally located beside the INEC and just a small walk or cycle ride away from Killarney's National Park, with spectacular views of the park and woodlands.

The Victoria was recently awarded a MICHELIN Key from the MICHELIN Guide - a key distinction for the most outstanding hotels.

BOOK NOW: [originalirishhotels.com](http://originalirishhotels.com) | T +353 1 295 8900

TOURING ITINERARY NO.4

# Slow Travel

## Discover the Heart of Ireland: A slow journey through time

Experience the charm of Ireland at a leisurely pace with this carefully crafted train itinerary. Inspired by Tourism Ireland's Slow Tourism Month, this sustainable journey invites you to step off the beaten path and savor the natural beauty, rich history, and warm hospitality of Ireland's most captivating regions. As the train meanders through picturesque landscapes, take time to explore charming towns, quaint villages, and scenic countryside.



### Day 1 — DUBLIN

Beginning in the historical Dublin City, walk the streets and you'll feel the energy of over 1,000 years of history, as echoes of the Vikings mix with buzzing boutiques, cobbled streets reverberate with the sounds of buskers, and 18th century parks play host to festivals, film and food markets.

Visit top attractions such as The Guinness Storehouse, St. Patrick's and Christ Church Cathedrals, The Book of Kells at Trinity College and Dublin Castle. Attend a show in the many theatres dotted around the city, explore the buzzing shopping areas or relax and unwind with a stroll through the many parks. Take a hop-on hop-off bus tour of the city or choose from a range of walking tours, from a food tour to a literary pub tour.



#### Stay at:

- 11** Buswells Hotel p24  
City centre
- 21** Fitzpatrick Castle Hotel p38  
Scenic location outside the city,  
access by dart/taxi

### Day 2 — DUBLIN TO CORK

Travel by train from Dublin Heuston to Cork (Kent) Station, approximately 2 hours 30 minutes, arriving into the centre of the city.

Cork City has a vibrant mix of history, culture, and charm. Wander the lively English Market, explore the historic Shandon Bells, or visit the impressive St. Fin Barre's Cathedral. Art lovers will enjoy the Crawford Art Gallery, while whiskey enthusiasts can tour the Jameson Distillery in nearby Midleton with day trips available from Cork City. Other one day coach tours include Mizen Head, Blarney Castle and Cliffs of Moher.

Take a stroll along the scenic River Lee, soak up the local atmosphere in cozy pubs, and experience the city's famous foodie scene. Or discover the best of the city on an open top hop-on hop-off bus tour.



#### Stay at:

- 7** Bayview Hotel p20  
Scenic location outside the city  
access by bus or train/taxi
- 14** Castle Hotel Macroom p31  
Nearby town, access by bus
- 17** Cork's Vienna Woods Hotel p34  
Near city centre, access by bus/taxi
- 22** Garryvoe Hotel p39  
Scenic location outside the city  
access by bus or train/taxi





Day 3 — CORK TO KILLARNEY

Travel from Cork (Kent) Station to Killarney via train and arrive into the town centre. The journey takes approximately 1 hour and 20 minutes.

Killarney is a paradise of natural beauty and historic charm. Explore [Killarney National Park](#), home to the stunning [Lakes of Killarney](#), [Torc Waterfall](#), and the scenic [Gap of Dunloe](#). Visit the historic [Muckross House & Gardens](#), step back in time at [Ross Castle](#), or take a boat trip to the mystical [Innisfallen Island](#). Enjoy a jaunting car ride through the park, hike up [Carrauntoohil](#), Ireland’s highest peak, or relax in the town’s lively pubs and restaurants. If you’re feeling adventurous, embark on an epic 180km guided [Ring of Kerry](#) coach tour which departs from Killarney daily, or set off on a day trip to explore the stunning [Dingle Peninsula](#).



Stay at:

2	Arbutus Hotel, Killarney Town centre	p15
26	Killeen House Hotel Near town centre, access by taxi	p47
39	Randles Hotel Town centre	p64
48	The Victoria Killarney Town centre	p73



Day 4 — KILLARNEY TO TRALEE

Take a short train journey from Killarney to Tralee, approximately 35 minutes.

Tralee offers a mix of history, culture, and outdoor adventure. Visit the [Kerry County Museum](#) to step back in time, explore the stunning [Tralee Bay Wetlands](#), or enjoy a show at [Siamsa Tíre](#), the National Folk Theatre of Ireland. Stroll through the beautiful [Tralee Town Park](#), home to the Rose Garden, or take in the breathtaking views along [Banna Strand](#). With its lively pubs, great shopping, and nearby scenic drives, Tralee is a must-visit destination in County Kerry. The highlight will be a castle stay. Make sure to find out the history of the castle.



Stay at:

6	Ballyseede Castle Near town centre, access by taxi	p19
---	---	-----



Day 5 — RETURN TO DUBLIN

Take a train from Tralee back to Dublin. This journey will take approximately 3 hours and 40 minutes.

# Hotels by destination

We offer a choice of hotels in Ireland’s most outstanding destinations. Explore windswept western wildernesses, cultural city treasures, cliff-lined coasts, splendid castles, scenic lakeland vistas, and the ancient histories of The East.

WILD ATLANTIC WAY

Abbeyglen Castle Hotel	p14	Knockranny House Hotel & Spa	p51
Arbutus Hotel Killarney	p15	Lough Inagh Lodge Hotel	p52
The Ardilaun Hotel	p16	Markree Castle	p55
Arnolds Hotel	p17	Mill Park Hotel	p60
Ballyseede Castle	p19	Mount Falcon	p61
Casey’s of Baltimore	p30	Parknasilla Resort & Spa	p62
Castle Hotel Macroom	p31	Randles Hotel	p64
Clew Bay Hotel	p32	Randles Townhouse	p65
Connemara Sands Hotel	p33	Sandhouse Hotel	p66
Dingle Beniners Hotel	p35	Screebe House	p67
The Dunraven Adare	p36	Seaview House Hotel	p68
Fitzgeralds Woodlands House Hotel & Spa	p37	Sheedy’s Boutique Hotel	p69
Hylands Burren Hotel	p45	Sneem Hotel	p71
Killeen House Hotel & Rozzers Restaurant	p47	Vaughan Lodge Hotel	p72
Kiltimagh Park Hotel	p50	The Victoria Killarney	p73

IRELAND’S ANCIENT EAST

Avalon House Hotel	p18
Bayview Hotel	p20
Bellingham Castle	p21
BrookLodge & Macreddin Village	p22
Cabra Castle Hotel	p25
Cork’s Vienna Woods Hotel	p34
Garryvoe Hotel	p39
Headfort Arms Hotel	p44
Pembroke Kilkenny	p63

DUBLIN AREA

Buswells Hotel	p24
Fitzpatrick Castle Hotel	p38
Luttrelstown Castle Resort	p54

IRELAND’S HIDDEN HEARTLANDS

Kilronan Castle Estate & Spa	p49
Lough Rynn Castle Estate & Gardens	p53
Slieve Russell Hotel, Golf & Country Club	p70

NORTHERN IRELAND

Brown Trout Golf & Country Inn	p23
Killeavy Castle Estate	p46
Killyhevlin Lakeside Hotel & Lodges	p48



# Hotels at a glance

Page		Star Rating	Number of Rooms														
14	Abbeyglen Castle Hotel	★★★★★	45				●		●	●		●	●	●	●	●	
15	Arbutus Hotel Killarney	★★★★★	30						●	●		●	●	●			
16	The Ardilaun Hotel	★★★★★	123					●	●		●	●	●	●	●	●	
17	Arnolds Hotel	★★★★	30			●		●	●	●	●	●		●			
18	Avalon House Hotel	★★★★★	30			●	●		●	●		●		●			
19	Ballyseede Castle	★★★★★	45	●			●	●	●		●	●	●	●	●		
20	Bayview Hotel	★★★★★	35				●		●			●	●	●			
21	Bellingham Castle	★★★★★	28	●		●	●		●	●	●	●		●	●		
22	BrookLodge & Macreddin Village	★★★★★	86	●	●	●	●		●	●	●	●	●	●	●		
23	Brown Trout Golf & Country Inn	★★★	15						●	●		●	●	●		●	
24	Buswells Hotel	★★★	67				●					●	●	●			
25	Cabra Castle Hotel	★★★★★	106	●		●	●		●		●	●	●	●	●		
30	Casey's Of Baltimore	★★★★	14				●		●			●	●	●	●		
31	Castle Hotel Macroom	★★★★★	58					●	●	●	●	●	●	●			
32	Clew Bay Hotel	★★★★	49						●	●		●	●	●	●		
33	Connemara Sands Hotel	★★★★★	21		●		●	●	●	●		●	●	●	●	●	
34	Cork's Vienna Woods Hotel	★★★★★	70				●	●			●	●	●	●	●	●	
35	Dingle Benners Hotel	★★★★	52				●		●	●		●	●	●	●		
36	The Dunraven Adare	★★★★★	86	●		●				●	●	●	●	●			
37	Fitzgeralds Woodlands House Hotel & Spa	★★★★★	96		●			●		●	●	●	●	●	●		
38	Fitzpatrick Castle Hotel	★★★★★	113				●	●	●		●	●	●	●	●		
39	Garryvoe Hotel	★★★★★	82				●	●	●	●	●	●	●	●	●		
44	Headfort Arms Hotel	★★★★★	45		●	●	●	●		●	●	●	●	●	●		
45	Hylands Burren Hotel	★★★★	32						●			●		●			
46	Killeavy Castle Estate	★★★★★	60	●	●	●	●		●		●	●	●	●	●	●	
47	Killeen House Hotel & Rozzers Restaurant	★★★★	27				●	●	●	●	●	●		●	●	●	
48	Killyhevlin Lakeside Hotel & Lodges	★★★★★	71		●		●	●	●		●	●	●	●		●	

Page		Star Rating	Number of Rooms														
49	Kilronan Castle Estate & Spa	★★★★★	85	●	●		●	●	●		●	●	●	●	●	●	
50	Kiltimagh Park Hotel	★★★★★	46				●	●	●		●	●	●	●	●		
51	Knockranny House Hotel & Spa	★★★★★	97	●	●		●		●	●	●	●	●	●	●		
52	Lough Inagh Lodge Hotel	★★★★★	13			●	●		●		●	●		●	●	●	
53	Lough Rynn Castle Estate & Gardens	★★★★★	44	●		●	●		●	●	●	●	●	●	●		
54	Luttrellstown Castle Resort	★★★★★	25	●		●	●			●	●	●	●	●	●		●
55	Markree Castle	★★★★★	31	●		●	●		●	●	●	●	●	●	●	●	
60	Mill Park Hotel	★★★★★	110			●	●	●	●	●	●	●	●	●	●	●	
61	Mount Falcon	★★★★★	32	●	●	●	●	●	●	●	●	●	●	●	●	●	●
		LODGES	45														
62	Parknasilla Resort & Spa	★★★★★	85	●	●	●	●	●	●	●		●	●	●	●		●
		LODGES	24														
63	Pembroke Kilkenny	★★★★★	73				●		●			●	●	●	●	●	
64	Randles Hotel	★★★★★	87	●			●		●	●	●	●	●	●	●	●	●
65	Randles Townhouse	TOWNHOUSE	14				●		●	●		●	●		●		
66	Sandhouse Hotel	★★★★★	50		●		●		●	●		●	●	●	●		
67	Screebe House	HISTORIC HOUSE WITH ACCOMMODATION	10		●		●		●		●	●			●	●	
68	Seaview House Hotel	★★★★★	25		●		●		●	●	●	●	●		●	●	●
69	Sheedy's Boutique Hotel	★★★★★	11				●		●	●		●	●		●		
70	The Slieve Russell Hotel, Golf & Country Club	★★★★★	224		●		●	●		●	●	●	●	●	●	●	
71	Sneem Hotel	★★★★★	69					●	●	●	●	●	●	●	●	●	●
72	Vaughan Lodge Hotel	★★★★★	32				●		●	●		●	●	●	●	●	
73	The Victoria Killarney	★★★★★	33	●			●		●			●	●	●	●		

If Electric Car Charging is not available on-site, many of our hotels will be able to direct you to nearby facilities.

# Reservations & Rates

Come and experience the very heart of Irish hospitality. Our dedicated team are on hand to assist you. Whether you want to find out more about our hotels or would like us to prepare a personalised itinerary, don't hesitate to get in touch.

EMAIL:  
reservations@originalirishhotels.com

PHONE:  
+353 1 295 8900

PHONE TOLL FREE FROM USA & CANADA:  
+1 877 905 6789

**Booking conditions**

- 1 All confirmed reservations will be allocated a unique booking number which should be quoted on all correspondence with the Central Reservations Office.
- 2 All reservations must be guaranteed with a valid credit card number.
- 3 All reservations will be confirmed by our Central Reservations Office in writing or by email. Please check all information is correct and advise our Central Reservations Office immediately of any discrepancies.
- 4 All written confirmations will show the correct tariff for the individual booking.

**Cancellation policy**

Cancellation policies may vary as per individual booking. Cancellations must be advised to Central Reservations Office 48 hours prior to arrival by calling: +353 1 295 8900 or by email, to: reservations@originalirishhotels.com. If cancellation is received after this hour, you will be charged the full amount of your booking. When a deposit has been paid, this is nonrefundable. Refer to the Cancellation Policy on your individual reservation as outlined on the booking confirmation.

\*Cancellation policy for Slieve Russell Hotel, Golf & Country Club and Parknasilla Resort & Spa is 72 hours prior to arrival.

**Before you book**

Whilst every care has been taken in compiling the information contained in this directory, occasionally some facilities, opening dates and services may change. Every year many of the hotels featured, undertake work to improve and enhance their properties. It is advisable to check all your particular requirements at the time of booking to ensure you have up to date information.

**Hotel classification**

The classification system used in this directory is based on the official Irish Tourist Board – Fáilte Ireland and Northern Ireland Tourist Board classification system.

P These premises have applied to Fáilte Ireland, Northern Ireland Tourist Board for registration at the time of going to print.

**Rates**

The rates featured in this publication relate to Bed & Breakfast per person sharing. These are guideline rates. Please ensure that you contact Central Reservations to verify the rates applicable to your reservation. Supplements may be payable for suites or superior/deluxe rooms. Also, where single or double/twin bedded rooms are occupied by one person a supplement may be payable.

Correspondingly, if more than two persons share a family room; special reduced rates may be arranged. Per person sharing: relates to the cost of Bed & Breakfast per person per night, on the basis of two persons occupying a standard double/twin bedded room. Rates quoted are subject to availability.

In the case of Hotels and Guesthouses in the Republic of Ireland, rates are quoted in € (Euro), whereas in Northern Ireland rates are quoted in STG£.

**Global distribution system**

GDS CHAIN ACCESS CODE : YH	SABRE	APOLLO	WORLDSPAN	AMADEUS
Abbeyglen Castle Hotel	08122	91542	27562	GWYABB
Bayview Hotel	38401	91672	40022	ORKBAY
BrookLodge & Macreddin Village	69519	52310	DUBBR	DUBBRO
Cabra Castle Hotel	55875	71413	6121	DUB121
Casey's of Baltimore	55878	71415	6132	ORK132
Castle Hotel Macroom	55813	71410	6133	ORK133
Cork's Vienna Woods Hotel	42292	3218	ORKVW	ORKVWH
Dingle Benners Hotel	55889	71421	6123	KIR123
Fitzgeralds Woodlands House Hotel & Spa	45222	97569	40548	SNNFWH
Garryvoe Hotel	56224	71423	6136	ORK136
Kiltimagh Park Hotel	78974	62186	14373	NOC373
Knockranny House Hotel & Spa	17342	21893	KNOCI	GWYKNO
Mill Park Hotel	60028	72419	6138	CFN138
Mount Falcon	77460	51780	13219	NOC219
Parknasilla Resor t & Spa	089065	53209	KIRPA	KIRPAR
Pembroke Kilkenny	143205	64015	KKYPE	KKYPEM
Sandhouse Hotel	34705	91773	40002	CFNSAN



# Booking & enquiries

Come and experience the very heart of Irish hospitality. Our dedicated team are on hand to assist you with any enquiry.



BOOK ONLINE:  
[www.originalirishhotels.com](http://www.originalirishhotels.com)

EMAIL:  
[reservations@originalirishhotels.com](mailto:reservations@originalirishhotels.com)

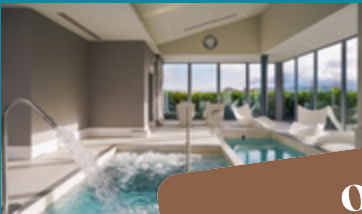
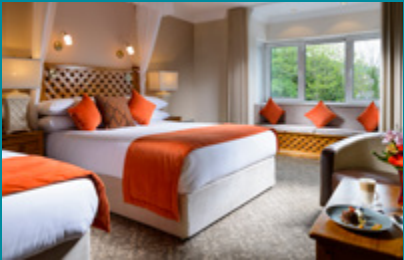
PHONE:  
+353 1 295 8900

PHONE TOLL FREE FROM USA & CANADA:  
+1 877 905 6789



01	Abbeyglen Castle Hotel Co. Galway	p14
02	Brown Trout Golf & Country Inn Co. Derry	p23
03	Sheedy's Boutique Hotel Co. Clare	p69

# Give the gift of Original Irish Memories Experiences Destinations Escapes Hotels



With our Gift Card you can choose from Ireland's largest collection of independent hotels.

Order now online at: [originalirishhotels.com](http://originalirishhotels.com)  
or call us on +353 1 295 8900



# Welcome to a world of difference

BOOK ONLINE:

[www.originalirishhotels.com](http://www.originalirishhotels.com)

EMAIL:

[reservations@originalirishhotels.com](mailto:reservations@originalirishhotels.com)

PHONE:

+353 1 295 8900

**Original  
Irish  
Hotels**



Guaranteed  
Irish



€3.00

AC21ENG201MHH